

**FISHER & PAYKEL**

**HEAT PUMP WASHER DRYER**

---

WD1871HG1

**INSTALLATION GUIDE**

**NZ AU**

# COMPONENTS REQUIRED

## TOOLS

### Supplied

☐ Spanner

### Not supplied

☐ Box cutter

☐ Phillips screwdriver

☐ Level

## PARTS

### Supplied and required

☐ 1x Water inlet hose

☐ 4x Blanking plugs

☐ 4x Foam strips

☐ 1x Shoe rack

☐ 1x Lint filter

## ACCESSING YOUR PRODUCT SPECIFICATIONS

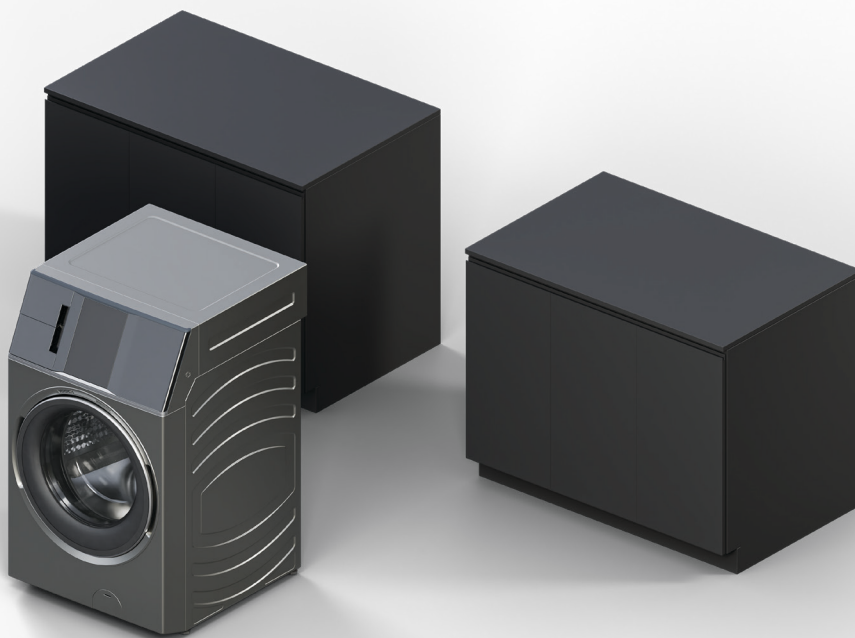
---



---

For full product, cabinetry and service specifications, refer to the Planning Guide. To access the Planning Guide, scan the QR code or visit [fisherpaykel.com/specify](https://fisherpaykel.com/specify). Search by appliance type, product name or model code.

---



## PRIOR TO INSTALLATION

---



[Fisherpaykel.com/specify](https://fisherpaykel.com/specify)

1. Ensure cabinetry and servicing specifications have been met and clearances have been considered.

Refer to planning guide for details.



2. Ensure floor is level and clear, and a finished return has been created.



3. Ensure power will remain accessible following install to allow access for any future product maintenance.

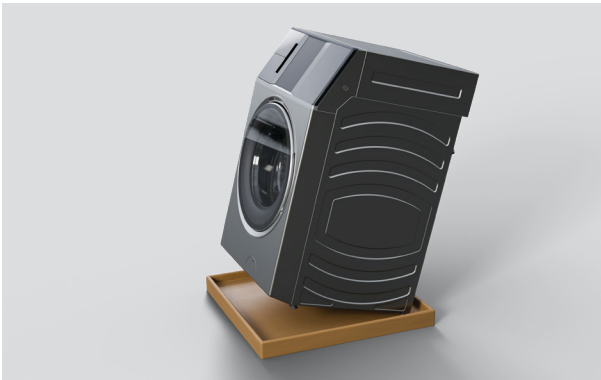
Service holes should be smooth with grommets installed where required.

## UNPACK PRODUCT

---



1. Cut the straps and the line printed on the top of the carton. Lift to remove. Discard braces and corner posts.



2. Remove any packaging and accessories from the top of the machine. Lift the washer off the base and remove any packaging and accessories from the base.

**Ensure there are three people to lift as machine is heavy, mechanical help may be required.**



3. Dispose of packaging responsibly.

## UNPACK PRODUCT

---



4. Protect flooring before positioning appliance as close to the installation location as possible, ensure enough working room is left available.

## FITTING THE LINT FILTER

---



**1.** Remove lint filter from the top of the machine packaging.

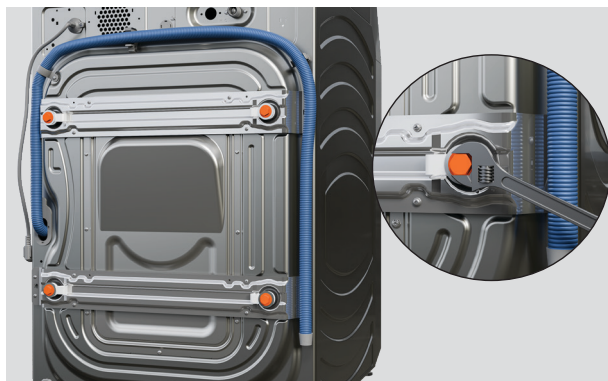


**2.** Place the lint filter into the machine between the detergent/softener compartments and screen.

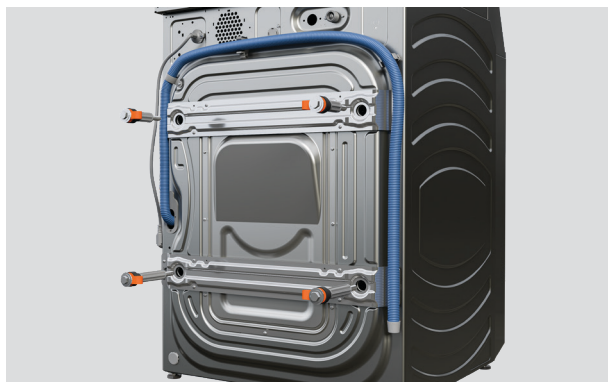
**Ensure the lint filter is correctly in place before running a cycle.**

## REMOVE TRANSIT BOLTS

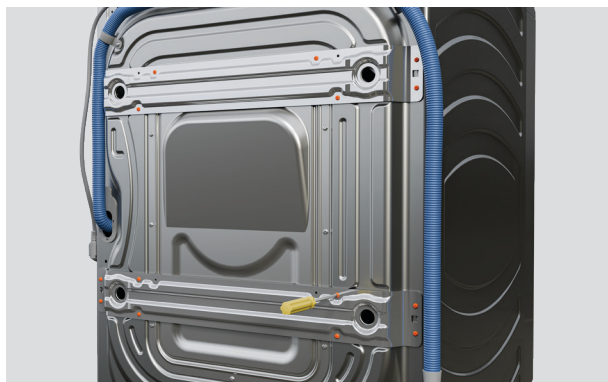
---



1. Using the supplied spanner, remove all four transit bolts from the back of the washer dryer.



2. Pull the rubber grommets and spacers outwards to remove.



3. Using a Phillips screwdriver, remove the side braces screws.



## REMOVE TRANSIT BOLTS

---



**4.** Remove and discard the braces.



**5.** Cover the transit bolt holes using the supplied plugs.

## LEVEL

---



1. Adjust the feet using the supplied spanner until the washer dryer is level front to back and corner to corner.



2. Check appliance is level before moving into final position.

## CONNECT CABLES AND HOSES

---



Fisherpaykel.com/specify

1. Refer to Planning Guide for full service information.



2. Connect the angled end of cold hose to the cold water inlet on the washer dryer.

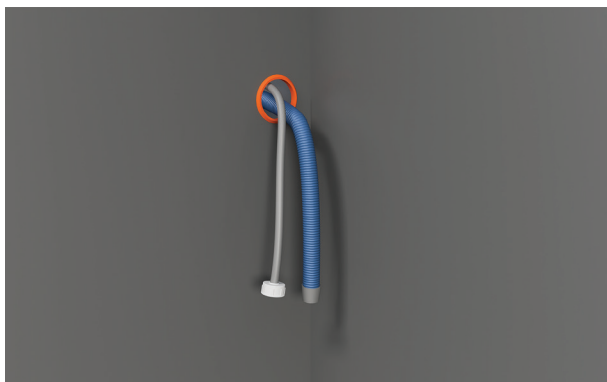


3. Partially push appliance into final position.

**Ensure there are three people to push as machine is heavy, mechanical help may be required. Take care not to crush the cables and hoses.**

## CONNECT CABLES AND HOSES

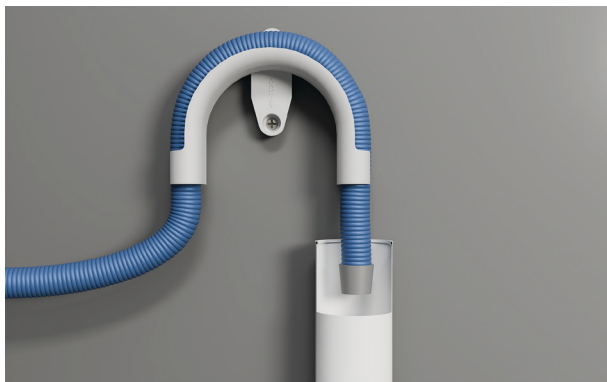
---



4. Route the power cable and hoses through service holes. Ensure power will remain accessible following install to allow access for any future product maintenance.



5. Install the drain hose guide to the back wall. Refer to the planning guide for placement details.



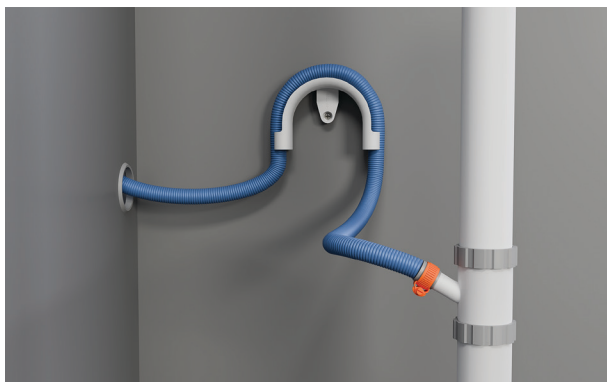
**6. A) Standpipe installations:**

Route the drain hose through the guide and place into standpipe.

Ensure a maximum of 20mm of the hose rests in standpipe.

## CONNECT CABLES AND HOSES

---



**6. B) Spigot installations:** Drill out blanking insert from the spigot.

Route the drain and place into spigot. Secure using a hose clamp.



**7.** Connect hose to tap before turning on. Check for leaks at all connection points.

If possible, recheck for leaks 24 hours after installation.



**8.** Connect the power cable and check washer dryer is powered on and connected.

## INSTALL WASHER DRYER

---



1. Carefully move the appliance into place without damaging the rubber levelling legs, as this can cause increased vibration. Spraying window cleaner on the floor may help it slide more easily or use specialist equipment if available to installer.

**NOTE:** Do not use the dispenser drawers or door to lift the Appliance.



2. Check alignment and ensure required clearances are maintained. Adjust as required.



3. Ensure all feet locking nuts are tightened, not tightening these may result in the product becoming unlevel overtime leading to vibration.

## COMPLETE INSTALLATION

---

### Installation Test Cycle

Do this before you wash or dry any items in your washer dryer. This is to check that your appliance is installed and functioning correctly prior to use.

1. Press **POWER** to activate your washer dryer.
2. Select **WASH, MORE CYCLES** then select **QUICK30**.
3. Press **CONFIRM** then **START** to start the cycle.
4. Wait until you see water in the bottom of the drum.
5. Observe the machine for any problems (e.g leaking from the hose, excess noise or vibrations). The washer will beep and display any faults on the screen if there are any problems.
6. Press **CANCEL** then **CONFIRM CANCEL** to stop the cycle and return to the home screen.
7. Scroll down the screen to find and select the **SPIN** cycle.
8. Press **CONFIRM** then **START** to start the cycle.

Check the drain hose is firmly secured to the standpipe or tub, or spigot. Observe that the appliance pumps out the water, and spins.

If there are any problems, you must address these before proceeding with normal use. The washer dryer will automatically turn off at the end of the cycle if there are no problems.

A test cycle must be carried out anytime the washer dryer is moved or tipped, this will ensure the appliance has been correctly reinstalled.

## INSTALLER CHECKLIST

---

### TO BE COMPLETED BY THE INSTALLER.

- ☐ Have the packaging and transit bolts and rods been removed?
- ☐ Is the washer dryer correctly levelled, feet are extended and cabinet corners are clear of the floor?
- ☐ Is the drain hose threaded through the hose guide 'U bend' (with no more than 20mm extended) and hooked into your standpipe or tub, or attached to a spigot?
- ☐ Have the taps been turned on?
- ☐ Is the hot hose connect to the hot value marked 'H'?
- ☐ Is the cold hose connected to the cold valve marked 'C'?
- ☐ Has the power cord been connected to an appropriate power supply and the power turned on?
- ☐ Have you preformed a test cycle?
- ☐ Complete a **DRUM CLEAN** cycle with half-load amount of detergent and without a load to remove any residues remaining in the appliance from the manufacturing process.



**FISHERPAYKEL.COM**

© Fisher & Paykel Appliances 2025. All rights reserved.

The models shown in this guide may not be available in all markets  
and are subject to change at any time.

The product specifications in this guide apply to the specific products and  
models described at the date of issue. Under our policy of continuous product  
improvement, these specifications may change at any time.

For current details about model and specification availability in your country,  
please go to our website or contact your local Fisher & Paykel dealer.

**432805A 08.25**