

---

# COMBI-MICROWAVE OVEN

## INSTALLATION GUIDE

---

Components required	3
Accessing your product specifications	4
Unpack product	6
Remove shelves	7
Connect power	8
Position in cavity	9
Align to surroundings	10
Secure to cavity	11
Refit shelves	12
Checklist	13

**FISHER & PAYKEL**

NZ AU UK IE SG

**MINIMAL**

OM76NMUB3, OM76NMUG3, OM76NMUNB3, OM76NMUNG3

**CONTEMPORARY**

OM76NCUDX3

**PROFESSIONAL**

OM76NPUX3

## COMPONENTS REQUIRED

---

### TOOLS

#### Not supplied

- ☐ Powered driver
- ☐ Cross-head screwdriver

---

### PARTS

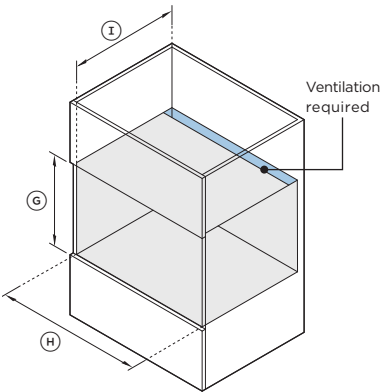
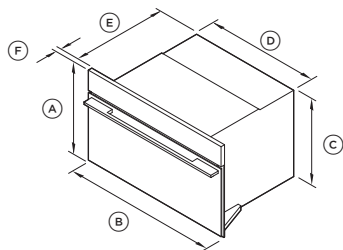
#### Supplied

- ☐ Screw SD #7X13 PAN PH ZP (2)

# ACCESSING YOUR PRODUCT SPECIFICATIONS



For full product, cabinetry and service specifications, refer to the Planning Guide. To access the Planning Guide, scan the QR code or visit [fisherpaykel.com/specify](https://fisherpaykel.com/specify). Search by appliance type, product name or model code.



PRODUCT DIMENSIONS		mm
A Overall height		458
B Overall width		758
C Chassis height		435
D Chassis width		720
E Chassis depth		545
F Control panel thickness		
Minimal and Contemporary models		20
Professional models		24

\*Measured from front of control panel.

CAVITY DIMENSIONS		mm
A Minimum inside height of cavity		440
B Minimum inside width of cavity		724
C Minimum inside depth of cavity*		550**
Recommended cabinet height		460
Recommended cabinet width		762

\*Excluding control panel thickness.

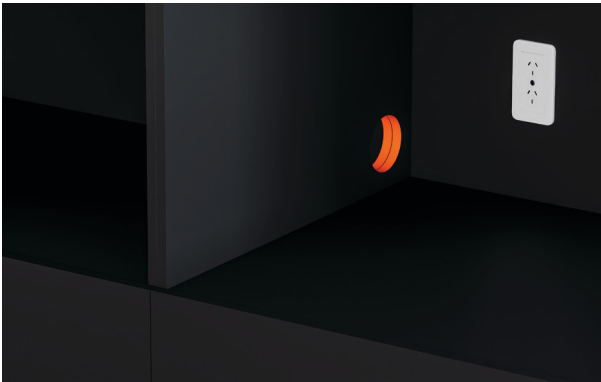
\*\*Requires ventilation at the rear of the cavity.

## PRIOR TO INSTALLATION

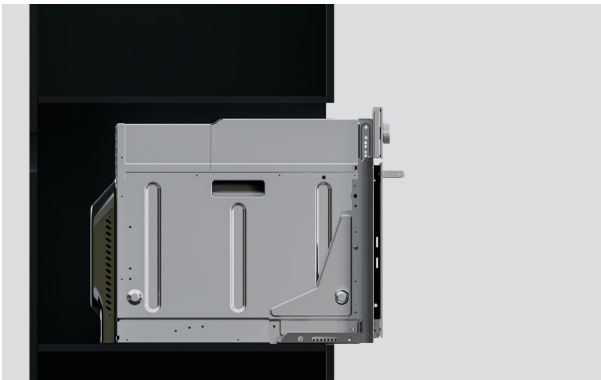


[fisherpaykel.com/specify](https://fisherpaykel.com/specify)

1. Refer to the Planning Guide for cabinetry, cavity, panel and service specifications.  
For dark cabinetry, ensure clashing has been considered and installed.



2. Ensure the cabinet meets the minimum cavity specifications required.



3. Ensure ventilation has been set up correctly.

## UNPACK PRODUCT

- Do not lift or move the product using the door handle.
  - Keep all packing materials until the unit has been inspected.
  - Inspect the product to ensure there is no shipping damage. If any damage is detected contact the dealer or retailer you brought the product from to report the damage.
  - Fisher & Paykel is not responsible for shipping damage.
- 



1. Cut all straps and remove the carton top cap.



2. Lift the carton sleeve and remove any transit packaging. Set aside any accessories. Dispose of packaging responsibly.

## REMOVE SHELVES



1. Open the door and remove all cable ties and packaging holding the oven shelves in place.

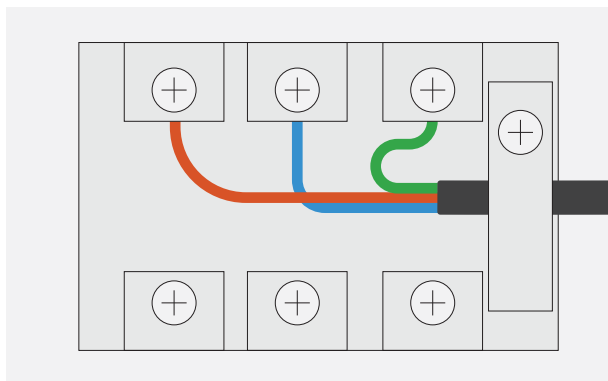


2. Grip the shelves at the front. Lift upwards and pull out from the microwave.

## CONNECT POWER



**1.** Unclip and lift cover to access terminal block.

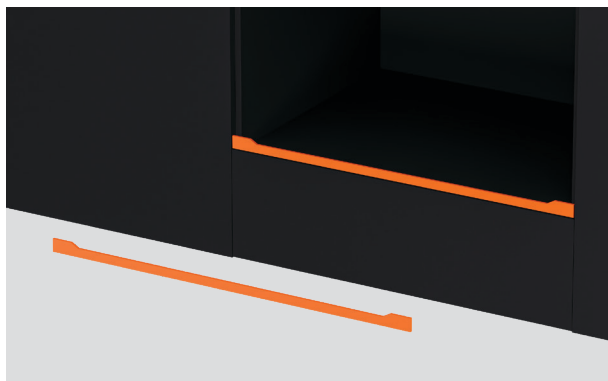


**2.** Based on your terminal block configuration, connect wires as shown. Connector and ports may not be present on all models.

Ensure oven is correctly Earthed and cable clamp is tightened before closing the cover.



## POSITION IN CAVITY



1. For dark cabinetry, the supplied trim can be used to enhance clashing finish. To install, remove the trim adhesive and press to secure to cavity\*.



2. Lift product into cavity.

\*To purchase cabinetry trim as an optional accessory, visit [fisherpaykel.com](http://fisherpaykel.com)

## ALIGN TO SURROUNDINGS

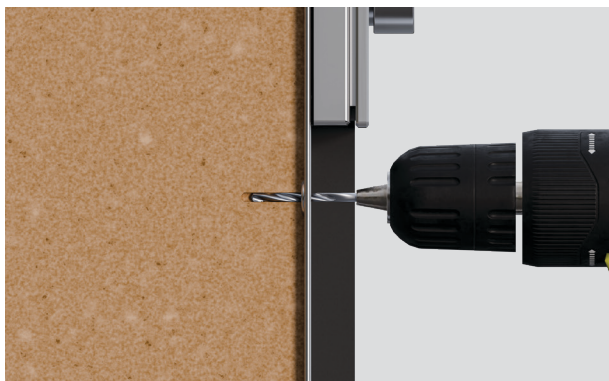


1. Align microwave with surrounding cabinetry and appliances.



2. Ensure the vertical gaps are even before making any horizontal adjustments.

## SECURE TO CAVITY



1. Using the product as a guide, pre-drill 2 x 3mm pilot holes.



2. Secure oven to cavity using the 2 x screws provided.

## REFIT SHELVES



1. Reposition shelves in the oven at the desired level. Ensure shelves are level and correctly positioned with the guard rail at the back.

# CHECKLIST

## Installation checks

- ☐ All clearances are correct.
- ☐ The product is level and securely fitted in the cabinetry.
- ☐ Ensure all ventilation has been set up correctly.
- ☐ All internal packaging is removed.
- ☐ The isolating switch can be easily reached.

## Test operation

- ☐ Turn product on at the power supply.
- ☐ Follow the on-screen guidance to connect the product to WiFi and set the clock.

## Complete and keep for safe reference:

Model \_\_\_\_\_

Serial no. \_\_\_\_\_

Purchase date \_\_\_\_\_

Purchaser \_\_\_\_\_

Dealer address \_\_\_\_\_

Installer's name \_\_\_\_\_

Installer's signature \_\_\_\_\_

Installation company \_\_\_\_\_

Installation date \_\_\_\_\_

