

FISHER & PAYKEL

MODULAR COOKTOP

FLUSH AND PROUD INSTALLATION

SINGLE PRODUCT WITH OVERHEAD VENTILATION

CG301DLPGB5, CG301DNGB5, CG301DLPGG5, CG301DNNGG5
models

INSTALLATION GUIDE

NZ AU

WARNING!



Electric Shock Hazard

Failure to follow this advice may result in electric shock or death.

- Before carrying out any work on the electrical section of the appliance, it must be disconnected from the mains electricity supply.
- Connection to a good earth wiring system is absolutely essential and mandatory.
- Alterations to the domestic wiring system must only be made by a qualified electrician.

WARNING!



Cut Hazard

Failure to use caution could result in injury.

- Take care - panel edges are sharp.

READ AND SAVE THIS GUIDE

To reduce the risk of fire, injury to persons or damage when using the appliance, follow the important safety instructions listed below. Read all the guidance before using the appliance. Ensure your appliance is properly installed and grounded by a qualified technician.

- Particular attention shall be given to the relevant requirements regarding ventilation.
- Read these instructions carefully before installing this product.
- Please make this information available to the person installing the appliance as it could reduce your installation costs.
- This appliance is to be installed and serviced only by an authorised person.
- Installation must comply with your local building and local gas authority codes and electricity regulations.
- Incorrect installation, for which the manufacturer accepts no responsibility, may cause personal injury or damage and could invalidate any warranty or liability claims.
- These appliances are registered in: (New Zealand) at www.energysafety.govt.nz and (Australia) with SAI Global at www.saiglobal.com.
- Appliances are factory set for Natural gas but are convertible to ULPG. If in doubt, refer to the local gas network operator or gas supplier to confirm gas type at installation site.
- Do not modify this appliance.
- Do not use or store flammable materials on or near this appliance.
- Do not spray aerosols in the vicinity of this appliance while it is in operation.
- Packing elements (eg plastic bags, polystyrene foam, staples, packing straps etc) and tools should not be left around during and after installation, especially if they are within easy reach of children, as these may cause serious injuries.
- You must remove the transit screws before installing the cooktop. See step 8 of installation instructions.

COMPONENTS REQUIRED

Supplied

- | | |
|---|---|
| <input type="checkbox"/> Shims (6) | <input type="checkbox"/> Foam sealing tape (1) |
| <input type="checkbox"/> T spacer (2) | <input type="checkbox"/> Gas regulator (1) |
| <input type="checkbox"/> Securing brackets (4) | <input type="checkbox"/> Gas elbow (1) |
| <input type="checkbox"/> Clamp screws (4)
Two lengths supplied | <input type="checkbox"/> Gas seal washer (1) |
| <input type="checkbox"/> Joiner kit (1) | <input type="checkbox"/> Trviet (quantity varies) |

Not supplied

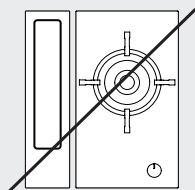
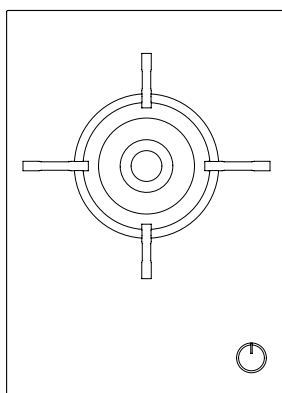
- | | |
|---|--|
| <input type="checkbox"/> Silicone gun | <input type="checkbox"/> Black installations:
Black, matte finish silicone rated
to 100°C or above** |
| <input type="checkbox"/> Phillips screwdriver | |
| <input type="checkbox"/> Level | <input type="checkbox"/> Grey installations:
Grey, matte finish silicone rated
to 100°C or above*** |
| <input type="checkbox"/> Box cutter | |
| <input type="checkbox"/> Router | |
| <input type="checkbox"/> Hex key | |
| <input type="checkbox"/> Spanner | |
| <input type="checkbox"/> Masking tape | |

Recommendation: Maxisil N30 Matte Black | *Recommendation: Maxisil A13 Anthracite

ACCESSING YOUR PRODUCT SPECIFICATIONS



For full product, cabinetry and service specifications, refer to the Planning Guide. To access the Planning Guide, scan the QR code or visit fisherpaykel.com/specify. Search by appliance type, product name or model code.



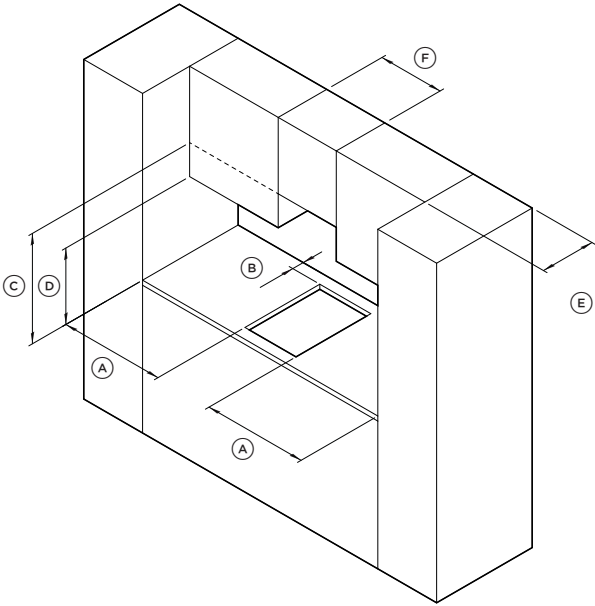
IMPORTANT NOTE

Modular Ventilation cannot be used alongside a gas cooktop.
Refer to the planning guide for more information.

CHECK CLEARANCES

IMPORTANT NOTE

Gas on Glass modules have greater clearance requirements compared to Induction and Teppanyaki modules. For multi-product installations ensure clearances are achieved for the product with the greater clearance requirements.



CABINETRY CLEARANCE DIMENSIONS

INDUCTION AND TEPPANYAKI MODELS

MM

(A)	Minimum clearance from side edges of cutout to nearest combustable surface	29
(B)	Minimum clearance from rear edge of cutout to nearest combustable surface	21
(C)	Minimum clearance from benchtop to: Overhead cabinet centered above the cooktop (non combustable) Rangehood or downward facing combustable surface Overhead exhaust fan	500 610 610
(D)	Minimum clearance from countertop to overhead cabinet not directly above cooktop	450
(E)	Maximum depth of overhead cabinetry	330
(F)	Minimum distance between overhead cabinets (not centered above cooktop)	combined cooktop width

CHECK CLEARANCES

VENTILATION OVERVIEW

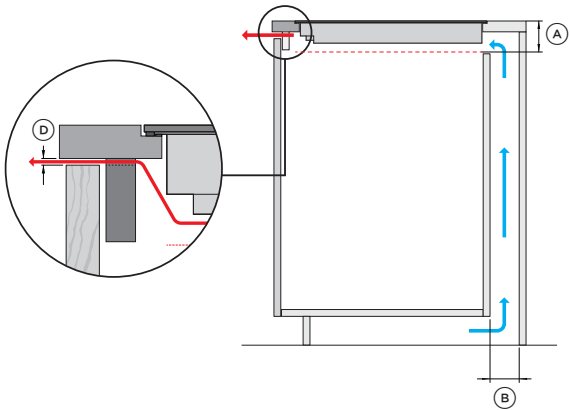
The Induction and Teppanyaki modules require ventilation to allow cooling of the electronic components within the chassis. When multiple products are installed their individual ventilation requirements must also be combined.

For detailed ventilation guidance, refer to the planning guide.

VENTILATION OPTION 1

INTAKE VIA SERVICE CHANNEL

Air is drawn up from the kick cavity through service channel at rear of cabinetry. If cavities are sealed, ventilation holes in toe kick panel are required.



CLEARANCE REQUIREMENTS	mm
(A) Clearance below chassis from top of cook surface	
- Induction	72
- Teppanyaki	86
- Gas on Glass	76

VENTILATION REQUIREMENTS

INTAKE at rear	mm	cm ²
(B) via service channel, min depth	20	-
(C) through adjacent cabinets, per side wall*	2x Ø50	40

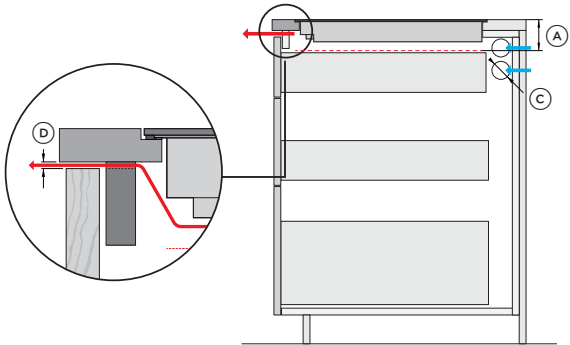
OUTLET at front*	w x h	cm ²
(D) 4mm gap along width of chassis		
30cm cook module	255 x 4	10
39cm cook module	340 x 4	14
60cm cook module	555 x 4	22
76cm cook module	715 x 4	30
90cm cook module	855 x 4	34

* vents with equivalent-sized area possible. Must be positioned in front of product.

VENTILATION OPTION 2

INTAKE VIA ADJACENT CABINETS

2x Ø50 holes are required in each side wall through to adjacent cabinets. Total of 4x holes required.



PRIOR TO INSTALLATION



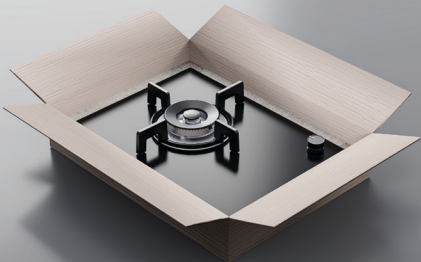
fisherpaykel.com/specify

1. Ensure cabinetry and servicing specifications have been met and clearances have been considered.

Refer to the Planning Guide for details.



2. Ensure all products and accessories are present.



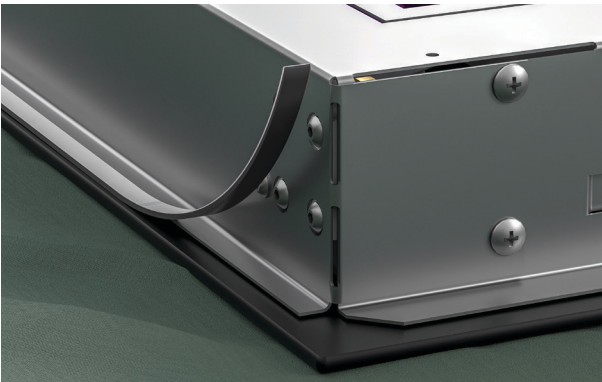
3. Carefully remove products from cartons. Set aside on a protected surface.

Dispose of packaging responsibly.

PREPARE COOKTOP



1. Fit the elbow and washer to the floating nut. Turn the cooktop over carefully and place onto a protected surface.



2. Apply adhesive foam seal around the glass overhang, 5mm from the edge of the glass.

Ensure the adhesive side is facing down to form a continuous seal.

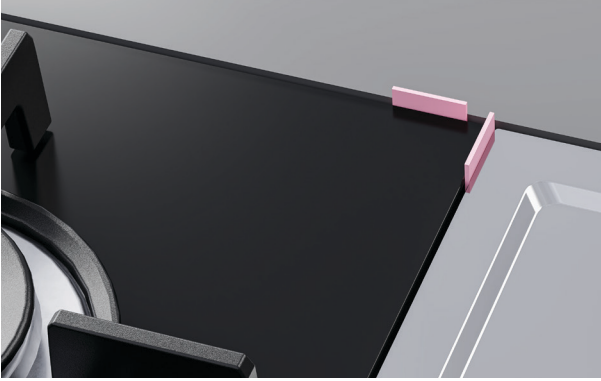
Trim any excess seal using a sharp knife taking care not to damage the cooktop or surface.

INSTALL IN CUTOUT



1. Remove foam tape backing before gently lowering the product into the cutout.

ALIGN PRODUCTS



1. Flush installations:

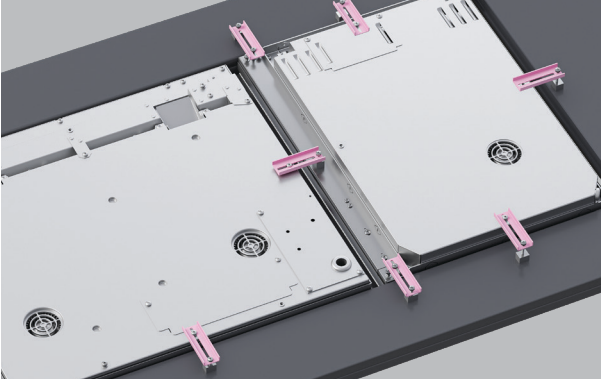
Place the shims around the outer edges of the cutout. Adjust positioning to ensure even spacing around the product is achieved.



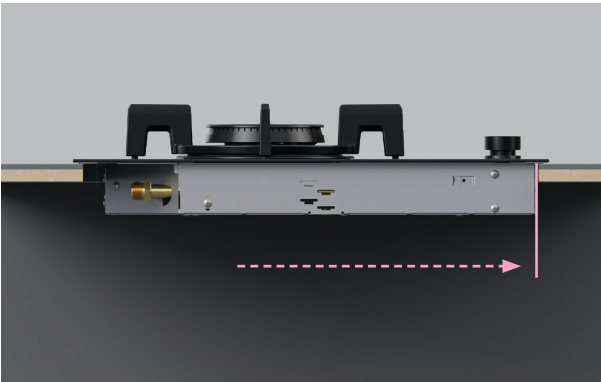
2. Place the shims on top of the product to gauge what thickness is required to create a level installation.

Slot the shims under the product flanges to raise as needed.

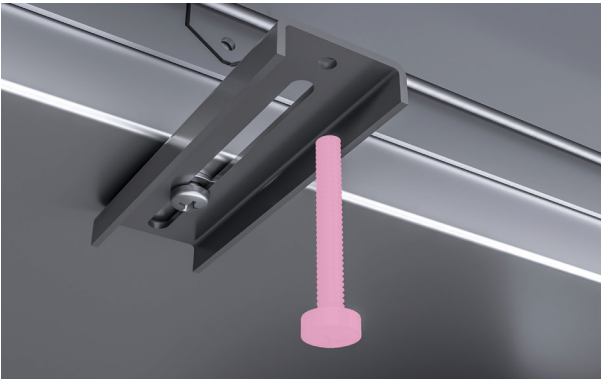
SECURE TO CUTOUT



1. Fit the securing brackets to the base of the product. For benchtops thinner than 25mm, use the longer clamp screws.
- A minimum of two brackets per cooktop is recommended.



2. Ensure product is installed towards the front edge of the cutout.



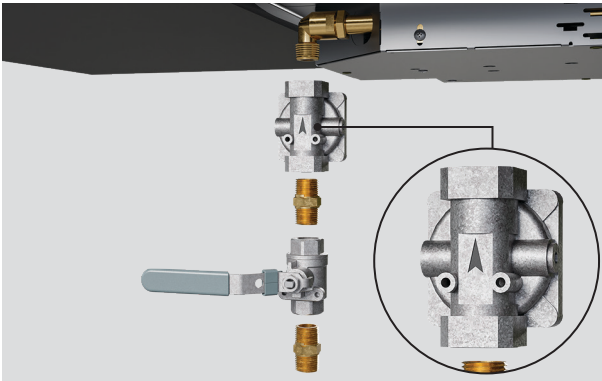
3. Tighten all clamp screws to secure the cooktop to the cutout.
- Do not overtighten clamp screws. Screws should only make light contact with cutout and joiner strips.**

CONNECT GAS SUPPLY

Check the safety and warnings section of this guide for gas regulations, requirements and important information before connecting.



1. Fittings must be connected by an authorized technician and comply with local regulations.



2. Ensure that the regulator arrow points towards the cooktop's inlet pipe, away from the gas supply.

Use threading compound on male threads only.



3. Connection: 1/2" BSP female.

Regulated Cooktop's Operating Pressure:

- **LPG:** 2.75 kPa
- **NG:** 1.00 kPa

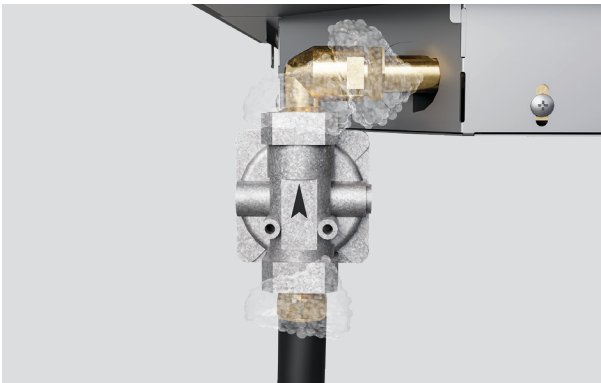
Minimum NG Supply Pressure to Regulator:

- 1.12 kPa

LEAK TEST



1. Turn all dials to the **OFF** position before opening the valve on the gas supply.



2. Apply a soap solution of 1:1 liquid soap and water to all connections, hoses and fittings from the supply to the connection at the cooktop.



3. If a leak is present, immediately turn off the gas supply, tighten any leaking connections and re-check. If connections continue to leak, try replacing them in case they have become defective or cracked.

If you cannot stop a gas leak, turn off the gas supply and call your local gas utility, or the dealer you purchased the appliance from.

Soap bubbles will appear where gas is escaping.

FIT BURNER AND TRIVETS



1. Ensure all burner parts are correctly fitted.

Flames should burn blue, without yellow tips or fluttering around the burner cap.



2. Place the trivet into the burner skirt recesses, ensuring it is securely positioned. Check that the trivet is level. If necessary, adjust the height of its feet.

CONNECT POWER

Before connecting to the mains power supply check that:

- The domestic wiring system is suitable for the power drawn by the cooktop.
- The voltage corresponds to the value given on the rating plate.
- The power supply cable sections can withstand the load specified on the rating plate.



fisherpaykel.com/specify

Refer to the Planning Guide for full service information.

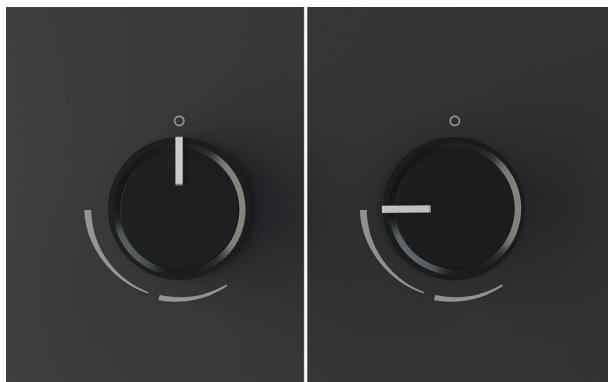
..... RATING PLATE LOCATIONS



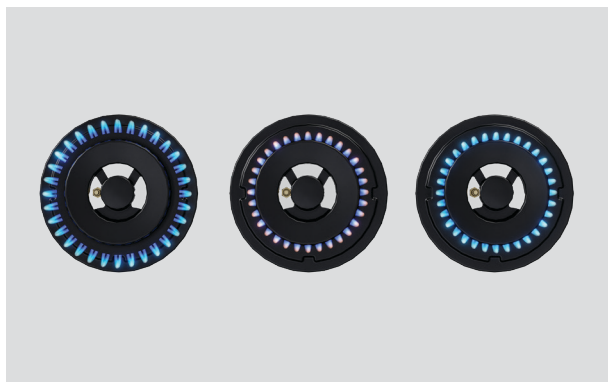
Right rear of product

These models are supplied with a power cable. The power cable should only be removed or replaced by a Fisher & Paykel trained and supported service technician or qualified person.

CHECK GAS BURNERS

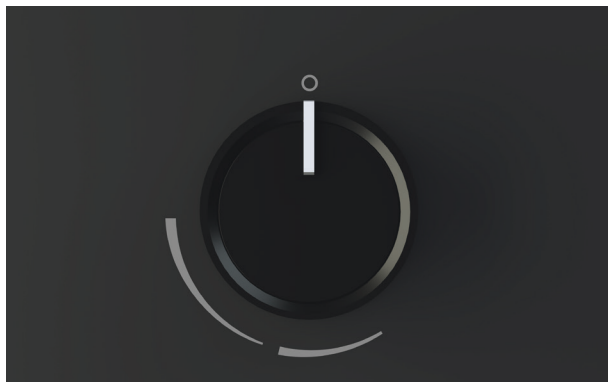


1. Push the dial down and turn counterclockwise to the highest heat setting. Wait until the burner ignites before adjusting to the desired heat setting.



2. Check flames are blue and stable. A yellow flame indicates insufficient air. A noisy flame that lifts away from the burner indicates too much air.

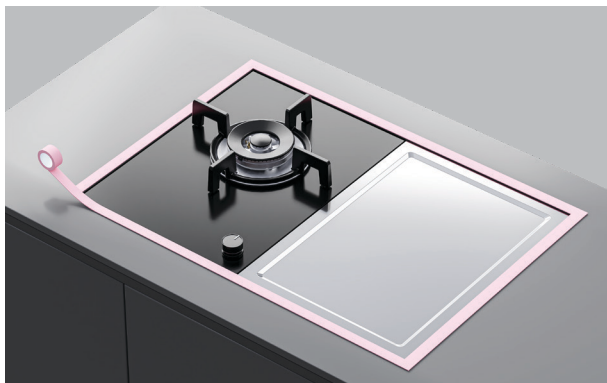
If any abnormality is evident, check that the burner assembly is located properly. Refer to page 21.



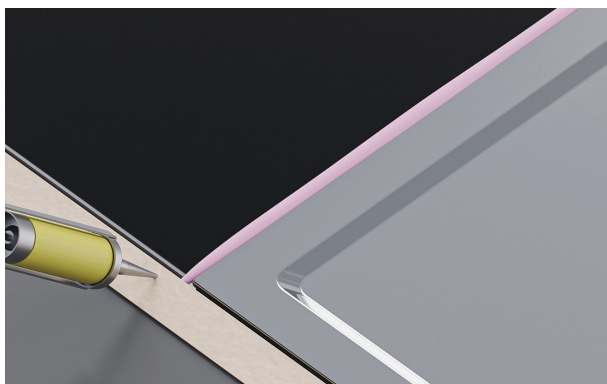
3. Turn all dials to the **OFF** position when done.

SEAL PRODUCT INTO CAVITY

Some silicone products may cause discoloration of the glass, in most cases this will fade as the silicone cures. Avoid applying too much silicon during installation.



1. Mask the area to be siliconed ensuring the product and countertop are protected.



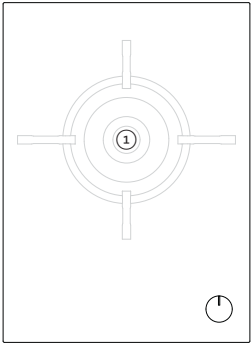
2. Flush installations only:

Carefully apply silicone in the gaps **between the countertop and product**.

Wipe away any excess silicone and remove mask once silicone has dried.

GAS RATE SUMMARY

CG151 MODELS



BURNER	GAS TYPE	JET SIZE (MM)	NOMINAL RATING
① Dual wok	NG 2.75 kPa*	1.35	9.7 MJ/hr
		1.35	
		0.70	
	LPG 1.0 kPa*	0.75	18.6 MJ/hr
		0.75	
		0.70	

*Nominal pressure with at least one large burner on high

INSTALLER CHECKLIST

TO BE COMPLETED BY THE INSTALLER

GENERAL

- ☐ Specified clearances have been maintained.
- ☐ Products are level – front to back and side to side.
- ☐ All packaging materials have been removed.
- ☐ There is constant flow of cool air from the cabinetry to the base of the products.
- ☐ Products have all been securely clamped.
- ☐ Communication cables are routed away from cooktop exhausts, secured to cabinetry and are unobstructed by drawers or other objects.
- ☐ Module layout configuration has been checked and confirmed.
- ☐ Touch controls and displays are functioning.

ELECTRICAL

- ☐ Receptacle with correctly rated over-current protection is provided for service cord connection.
- ☐ Adequate ground connection established.
- ☐ Domestic wiring is suitable for total cooktop rating.
- ☐ Power supply cable is accessible and is not touching the products.

GAS

- ☐ Manual gas shut-off valve installed in an accessible location.
- ☐ Unit tested and free of gas leaks.

FISHERPAYKEL.COM

© Fisher & Paykel Appliances 2025. All rights reserved.

The models shown in this guide may not be available in all markets
and are subject to change at any time.

The product specifications in this guide apply to the specific products and
models described at the date of issue. Under our policy of continuous product
improvement, these specifications may change at any time.

For current details about model and specification availability in your country,
please go to our website or contact your local Fisher & Paykel dealer.

432935A 03.25