

# **FISHER & PAYKEL**

## **FABRIC CARE SOLUTION**

---

### **FABRIC CARE CABINET INSTALLATION**

FC1260H2, FC1260HG2, and FC1260FZB2 models.

**INSTALLATION GUIDE**

**NZ AU**

**COMPONENTS REQUIRED**

---

..... **TOOLS** .....

**Supplied**

☐ 6mm Allen key

☐ Box cutter

☐ Phillips screwdriver

☐ Level

..... **PARTS** .....

**Supplied and required**

☐ 1x 6mm Allen key

☐ 1x Drip tray

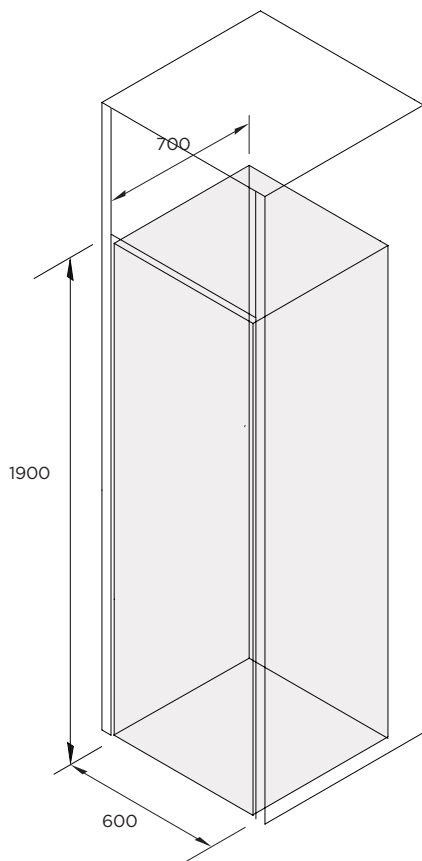
☐ 1x Garment hanger box

☐ 1x Shoe rack

## ACCESSING YOUR PRODUCT SPECIFICATIONS



For full product, cabinetry and service specifications, refer to the Planning Guide. To access the Planning Guide, scan the QR code or visit [fisherpaykel.com/specify](https://fisherpaykel.com/specify). Search by appliance type, product name or model code.



## PRIOR TO INSTALLATION

---



[fisherpaykel.com/specify](https://fisherpaykel.com/specify)

1. Ensure cabinetry and servicing specifications have been met and clearances have been considered.

Refer to Planning Guide for details.



2. Ensure floor is level and clear and a finished return has been created.



3. Ensure power will remain accessible following install to allow access for any future product maintenance.

Service holes should be smooth with gromets installed where required.

Refer to the services section of the Planning Guide for more details.

## UNPACK

---



**1.** Cut the straps and the line printed on the back of the carton. Cut to the nearest corner and remove sleeve. Discard braces, corner posts and sleeve.

Remove packaging and accessories from inside cabinet.



**2.** Dispose of packaging responsibly.



**3.** Protect flooring before positioning cabinet as close to the installation location as possible, ensuring enough working room is left available.

## CONNECT POWER CABLE

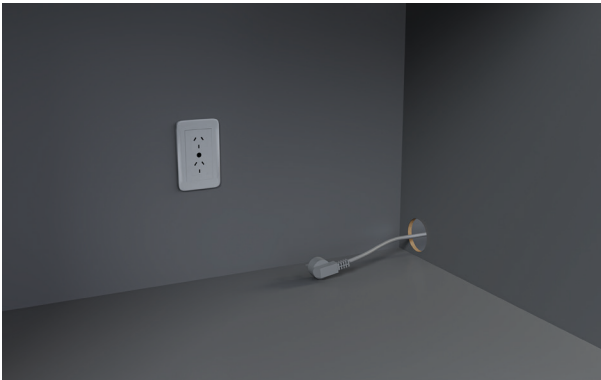
---



[fisherpaykel.com/specify](https://fisherpaykel.com/specify)

1. Ensure Cabinetry and services specifications have been met and clearances have been considered.

Refer to planning Guide for details.



2. Route the power cable through service hole.

Ensure power will remain accessible following install to allow access for any future product maintenance.



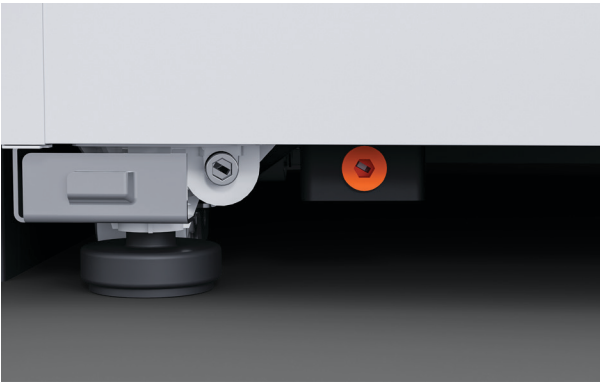
3. Connect the power cable and check cabinet is powered on.

## INSTALL AND LEVEL

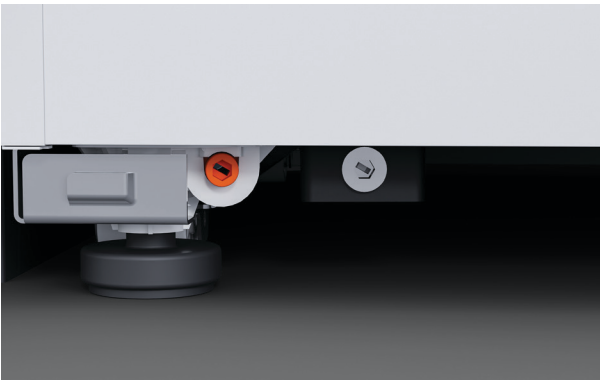
---



**1.** Push cabinet into final install location taking care not to damage cords.



**2.** Adjust the front of the product by turning the outer screws clockwise to lower the feet until the product is off the wheels.



**3.** Adjust the rear of the product by turning the inner screws clockwise to lower the feet until the product is off the wheels.

## INSTALL AND LEVEL

---



4. Check final alignments and that the product is flush to the front of cabinetry.
- Ensure required clearances are maintained and adjust as required.



5. Clip drip tray into position.



**FISHERPAYKEL.COM**

© Fisher & Paykel Appliances 2025. All rights reserved.

The models shown in this guide may not be available in all markets  
and are subject to change at any time.

The product specifications in this guide apply to the specific products and  
models described at the date of issue. Under our policy of continuous product  
improvement, these specifications may change at any time.

For current details about model and specification availability in your country,  
please go to our website or contact your local Fisher & Paykel dealer.

**432976A 09.25**