

---

# HEAT PUMP DRYER PERFORMANCE

---

Get to know your heat pump dryer	3
Set a cycle to suit the load	4
Empty the water tank	5
Clean the lint filter	6
Clean and maintain the dryer	7
Clean the condenser filter and grid	8

**FISHER & PAYKEL**

## HEAT PUMP DRYER

---

DH8060C, DH8060P, DH9060C, DH9060FS1, DH9060FSG1, DH9060H1,  
DH9060HG1, DH9060HL1, DH9060HLG1, DH9060P, DH9060P2,  
DH9060PG2



### Download the app

- Access extra features and information
- Get the latest software updates
- Register your product for streamlined support

## GET TO KNOW YOUR HEAT PUMP DRYER

Your heat pump dryer is different to a traditional vented dryer. Heat pump technology dries your items at a lower temperature than a vented dryer to ensure gentle, energy-efficient fabric care without overdrying your items.



### Understanding post-dryer feel

Items may feel slightly damp when first removed from a heat pump dryer, but they will feel completely dry within a few minutes and are ready to wear immediately. If you prefer your items to feel completely dry as soon as the drying cycle ends, you can adjust the dryness level.



### Adjusting dryness level

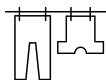
Set the dryness level from 1 (Damp / Iron Ready) to 5 (Extra Dry) depending on your model.

- 1 — **Damp / Iron Ready** - Items remain slightly damp for easy ironing.
- 2 — **Damp + Dry** - A bit drier, but still suitable for ironing.
- 3 — **Dry** - Feels dry, with a small amount of moisture to prevent static.
- 4 — **Dry + Extra Dry / Dry Plus** - Very dry with minimal moisture left.
- 5 — **Extra Dry** - The highest level of drying. Best for towels and linens.



### Choosing a location for your dryer

Ensure your dryer is installed in a well-ventilated area that is not subject to very low or high temperatures. Room temperatures below 5°C or above 35°C can affect the performance of your dryer.



### Finishing air-dried items in the dryer

Use a **TIME DRY** cycle for at least 30 minutes to finish partially dry items. This allows time for the dryer to reach temperature.



### Loading items directly from the washing machine

Make sure items have been through a spin cycle to remove excess water before placing them in the dryer. Overly wet items will extend the drying cycle and may affect drying performance.

SET A CYCLE TO SUIT THE LOAD



The maximum load size for your dryer changes based on the type of items in a load.

Follow the guide below to avoid overfilling the dryer, allow enough space for items to tumble freely and to maintain good drying performance.



Heat type	Cycle	Purpose	Max load size	
High heat	Mixed	An everyday cycle for mixed fabrics. Ideal for items like t-shirts and trousers.	9 kg	Large
	Cotton	A high heat cycle for natural cotton fabrics.	9 kg	Large
	Heavy	A stronger cycle designed for durable fabrics.	8 kg	Large
	Towels	Designed for drying thick and absorbent items such as towels.	6 kg	Medium
	Easy iron	Designed to minimise creasing in items like shirts. Items are ready to iron at the end of the cycle.	4 kg	Small
Low heat	Delicate	A gentle cycle for delicate items such as blouses and dresses.	4 kg	Small

## EMPTY THE WATER TANK

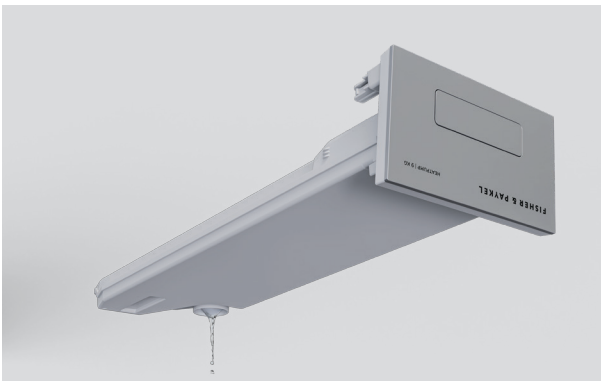


Water collects in the water tank in models with no drain hose installed. Empty the water tank before or after every load. Never run the dryer without the water tank in place unless the drain hose is installed. Refer to the installation guide for instructions if you want to install the drain hose.



**1.** Use the handle to pull the water tank out.

The tank can be heavy when full. Support the tank and keep it level to avoid spilling water.



**2.** Empty the water tank, then place it back in the dryer.

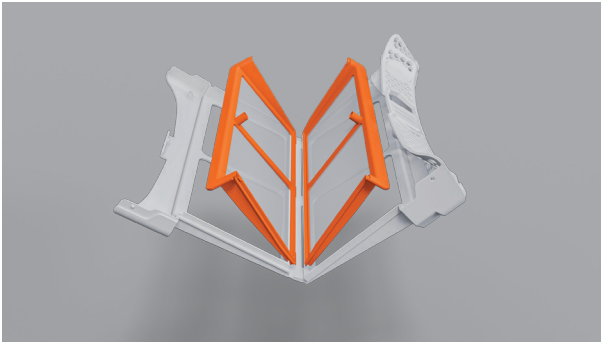
## CLEAN THE LINT FILTER



Remove and clean the filter each time you use the dryer, as blocked filters will reduce drying performance, and lint can become a fire hazard if it builds up in or around your dryer.



**1.** Open the dryer door and remove the lint filter.



**2.** Open the filter and separate the parts. Use your hand or a soft cloth to remove the lint from both parts.



**3.** Refit the internal filter part to the outer part, then close the filter and place it back in the dryer.

## CLEAN AND MAINTAIN THE DRYER



Make these steps a regular part of your cleaning and maintenance routine to get the best results from your dryer.



### Clean the sensors

The sensors are located behind the lint filter and detect whether the laundry is dry or not. Clean the sensors regularly with a soft damp cloth to maintain drying performance.

### Clean inside the dryer drum

Check and clean the inside of the drum regularly with a damp cloth to remove any dirt or lint. Do not leave any metal objects in the drum as these may cause rust.

### Clean surfaces and accessories

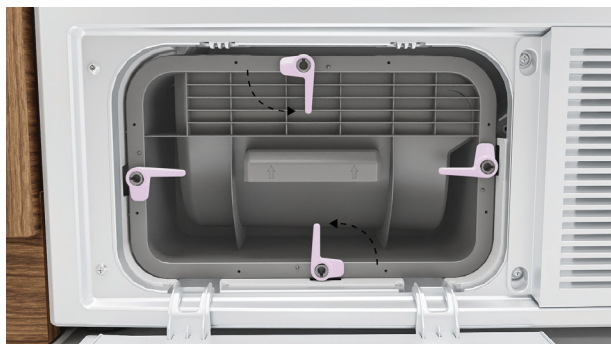
Wipe with a damp cloth and mild detergent, then dry with a clean, lint-free cloth. We do not recommend using the following cleaning products as they may cause damage:

- Plastic or stainless steel scouring pads
- Abrasive, solvent, household cleaners
- Acid or alkaline cleaners
- Hand wash or soap
- Stainless steel cleaners or polishes
- Laundry detergents or disinfectants

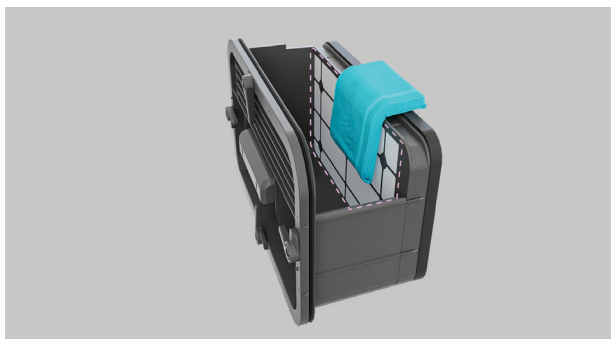
## CLEAN THE CONDENSER FILTER AND GRID



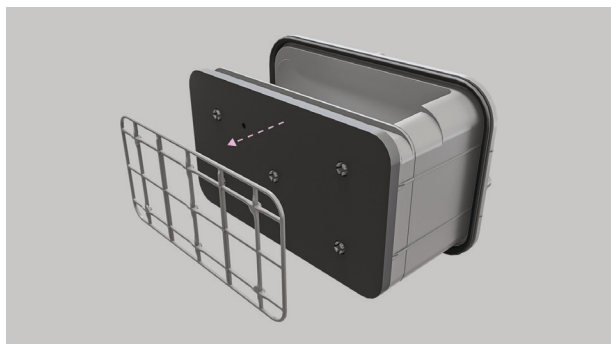
Clean the condenser filter, filter foam and condenser grid regularly to maintain drying performance.



**1.** Turn the four condenser lock levers 90° counterclockwise, then pull out the filter.



**2.** Wipe the mesh surface of the filter to remove any lint build-up.

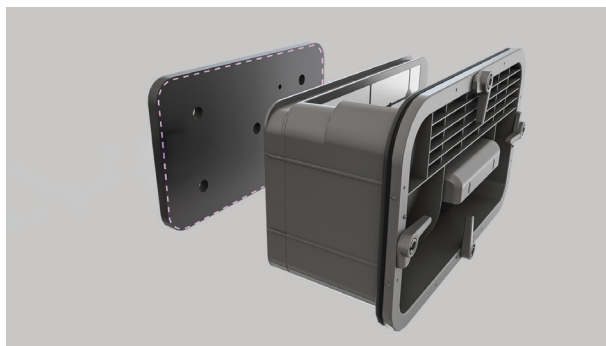


**3.** Remove the bracket securing the foam to the condenser filter and take out the foam.

Remove any lint build-up from the foam, then refit and secure it with the bracket.



## CLEAN THE CONDENSER FILTER AND GRID

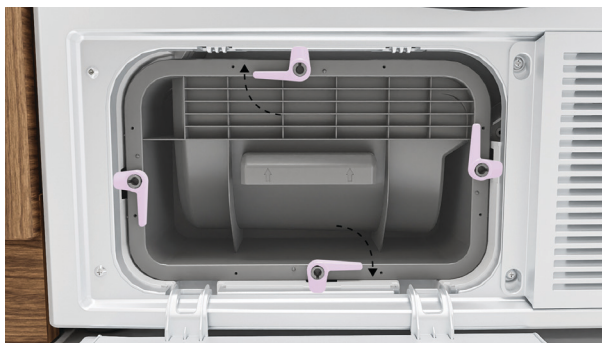


**4.** Remove the foam and use a vacuum to remove any lint build-up.

Replace the foam and secure with the bracket.



**5.** Use a vacuum cleaner with a soft brush attachment to clean the grid behind the filter, moving vertically up and down the fins. The brush should be soft enough not to damage the condenser fins.



**6.** Refit the filter and turn the locks clockwise to secure it.

