

FISHER & PAYKEL

FABRIC CARE SOLUTION

SIDE BY SIDE INSTALLATION (ON PLINTH)

DH8060J5, DH9060J5, DH8060P5, DH8060PG5, DH1060P5, DH1060PG5,
DH1060R5, DH1060RG5, DH1060T5, DH1060TG5, DH1060MZB5, DH1060H5,
DH1060HG5, DH1060HL5, DH1060YZB5, DH1060YLZB5, DH1060D, DH1060HLG5,
DH9060D5, DH1060DG5, DH9060DG5, WH8060J5, WH9060J5, WH8060P5,
WH8060PG5, WH9060P5, WH9060PG5, WH1060P5, WH1060PG5, WH1260P5,
WH1260PG5, WH9060D5, WH9060DG5, WH1060D5, WH1060DG5, WH1260D5,
WH1260DG5, WH1260R5, WH1260RG5, WH1260MZB5, WH1260T5, WH1260TG5,
WH1260H5, WH1260HG5, WH1260YZB5 models.

INSTALLATION GUIDE

NZ AU

COMPONENTS REQUIRED

TOOLS

Supplied

- ☐ 6mm Allen key
- ☐ Spanner (washer)
- ☐ Spanner (plinth)

Not supplied

- ☐ Box cutter
- ☐ Phillips #2 screwdriver
- ☐ Level
- ☐ T25 Torx screw
- ☐ Flathead screwdriver

PARTS

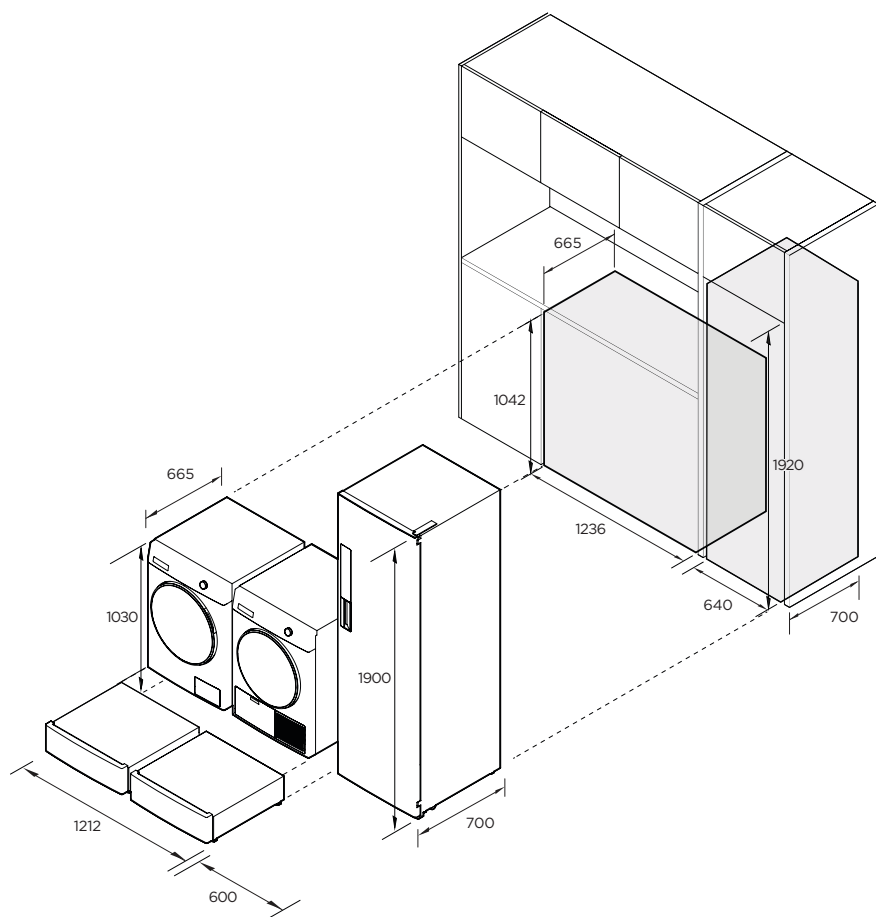
Supplied and required

- ☐ 4x M10 bolts
- ☐ 2x plinth bolt hole covers
- ☐ 4x short stacking kit screws
- ☐ 2x long stacking kit screws
- ☐ 2x Dryer front brackets
- ☐ 2x Dryer rear brackets
- ☐ 2x Dryer rear mounting screws

ACCESSING YOUR PRODUCT SPECIFICATIONS



For full product, cabinetry and service specifications, refer to the Planning Guide. To access the Planning Guide, scan the QR code or visit fisherpaykel.com/specify. Search by appliance type, product name or model code.



PRIOR TO INSTALLATION



fisherpaykel.com/specify

1. Ensure cabinetry and servicing specifications have been met and clearances have been considered.

Refer to the Planning Guide for details.

2. Ensure floor is level and clear and a finished return has been created.

3. Ensure power will remain accessible following install to allow access for any future product maintenance.

Service holes should be smooth with grommets installed where required.

Refer to the services section of the Planning Guide for more details.

UNPACK ALL PRODUCTS



Washer and Dryer:

Cut the straps and the line printed on the top of the carton. Lift to remove. Discard braces and corner posts. Remove any packaging and accessories from the drum and base packer.

Dispose of packaging responsibly.



Fabric Care Cabinet:

Cut the straps and the line printed on the back of the carton. Cut to the nearest corner and remove sleeve. Discard braces, corner posts and sleeve.

Remove packaging and accessories from inside cabinet.

Dispose of packaging responsibly.



Plinth:

Cut the straps and tape to open the carton from the top. Remove the EPS cap before lifting the plinth out.

Set cardboard aside for later use. **Ensure accessories are removed from the EPS cap before discarding EPS and rubber spacers responsibly.**

UNPACK ALL PRODUCTS

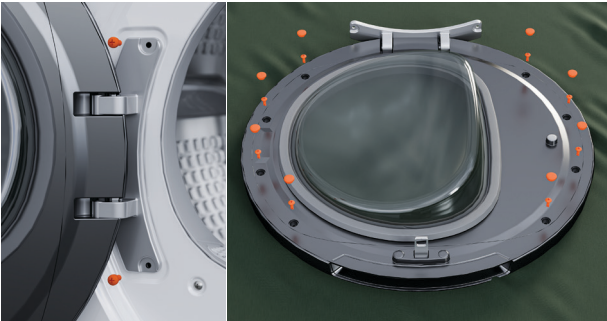


1. Protect flooring before positioning products as close to the installation location as possible, ensuring enough working room is left available.

REVERSE DRYER DOOR (OPTIONAL)

Some dryer models have reversible hinge and latch fittings that can be switched so that the door can open to the left or right, as needed. Refer to table below for applicable and non applicable models.

REVERSIBLE	NON-REVERSIBLE
DH8060J5, DH9060J5, DH8060P5, DH8060PG5, DH1060P5, DH1060PG5, DH9060D5, DH9060DG5, DH1060D5, DH1060DG5, DH1060R5, DH1060RG5, DH1060T5, DH1060TG5, DH1060HL5, DH1060HLG5, DH1060H5, DH1060HG5.	DH1060YZB5, DH1060YLBZB5, DH1060MZB5.



1. Unscrew hinge screw using a T25 torx screwdriver then remove door and place face down on a protected surface. Remove plugs (x 8) from inner door flanges, then remove screws.



2. Insert flat-head screwdriver in access slot to pry off inner door. Rotate door 180 degrees and fit back in place. Reattach screws, alternating between sides of the door. Replace plugs.



3. On dryer, unscrew and remove latch cover to access latch.

REVERSE DRYER DOOR (OPTIONAL)



4. Unscrew latch, and slide to remove.



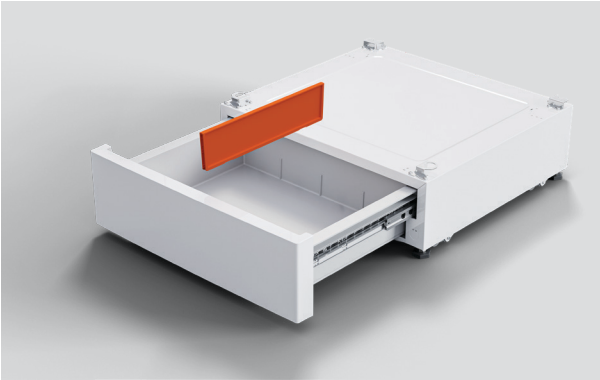
5. Rotate latch and insert on opposite side of dryer. Secure with screw.

Refit and secure latch cover with latch cover screws.

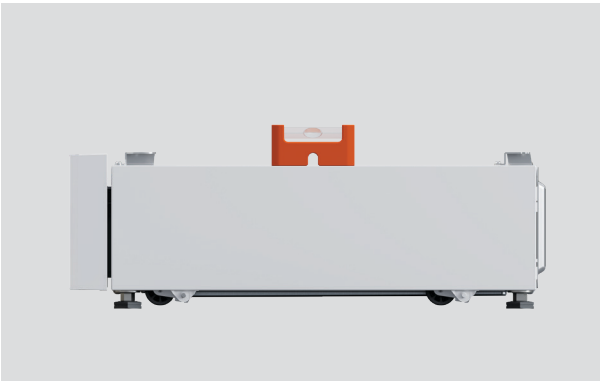


6. Refit door hinge and secure with hinge screws.

LEVEL PLINTH



1. Push the front of the plinth to open. Remove the divider before closing the drawer.

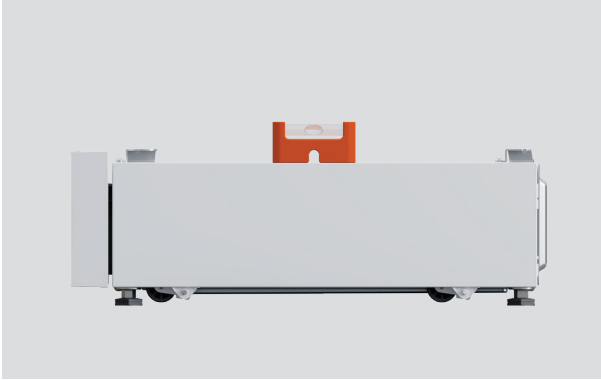


2. Place the plinth in its final install location. Adjust the feet using the supplied spanner until the washer is level front to back and corner to corner.



3. Using the spanner provided, tighten the lock nuts against the base of the plinth to lock the feet in position on the ground.

LEVEL PLINTH



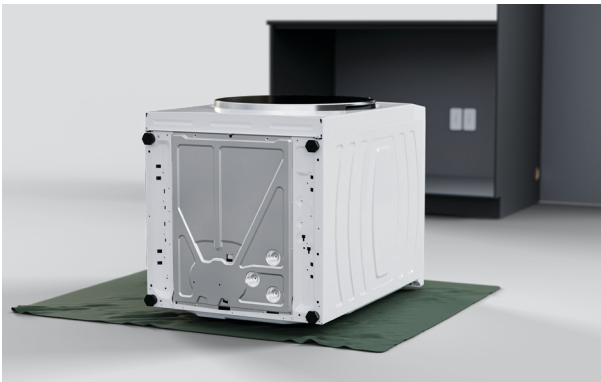
4. Recheck that the plinth is level, front to back and side to side. Once level, move the plinth to an accessible location to allow washer/dryer to be installed.

FIT WASHER TO PLINTH



IMPORTANT!

1. Before tilting washing machine over remove dispenser drawer.



2. Tilt the washer back onto a protected surface such as the plinth carton. Ensure cords and hoses are not crushed. For new products, we recommend keeping the transit bolts fitted during this step.



3. Unwind feet using the supplied spanner to remove.

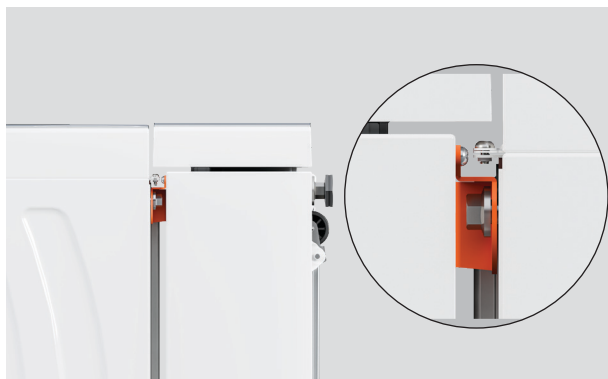
FIT WASHER TO PLINTH



4. Partially fit the four M10 bolts supplied with the storage plinth to the washer.



5. Using the spanner provided as a spacer, ensure a 4mm gap is left between the bolt head and the chassis.

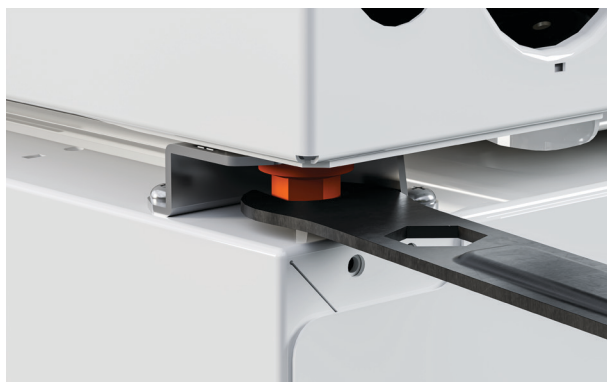


6. Align all four brackets on plinth to the M10 bolts on the washer and slot into place. Tighten the front bolts with the supplied spanner.

FIT WASHER TO PLINTH



7. Lift the washer upright, take care as storage drawer may open.



8. Tighten the rear bolts.



9. Roll washing machine into alcove and check alignment. To do this, use the supplied 6mm hex key, rotate clockwise to lower both sets of wheels via the adjustment screws.

FIT WASHER TO PLINTH



10. Ensure all feet are raised off the floor before rolling the stacked products to the final install location.



11. Roll the products into the alcove.

Take care not to damage alcove when rolling product in.



12. Using the supplied 6mm hex key, rotate counter-clockwise to raise both sets of wheels via the adjustment screws.

FIT WASHER TO PLINTH

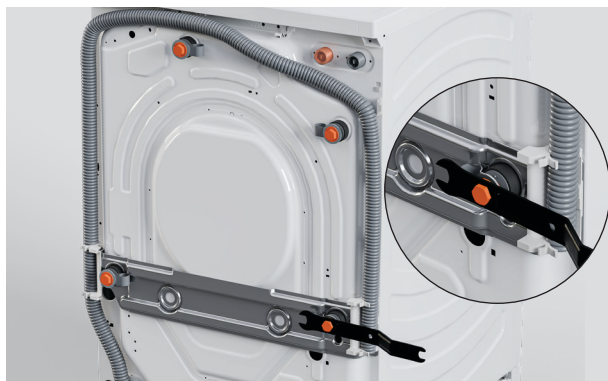


13. Check that products are still level.
Adjust plinth feet if necessary.

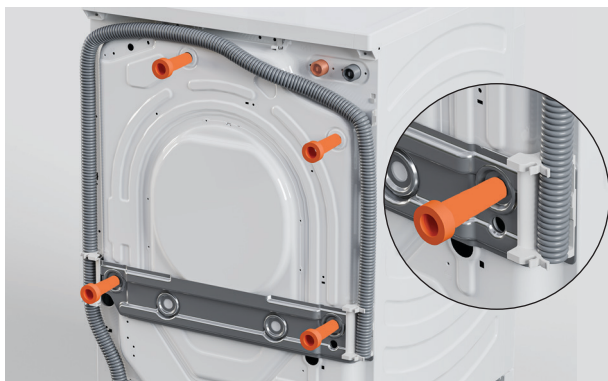


14. Rotate clockwise to lower both sets of wheels and roll products out of alcove to resume stacking kit installation.

REMOVE WASHER TRANSIT BOLTS



1. Using the supplied spanner, remove all four transit bolts from the back of the washer.



2. Pull the rubber grommets and spacers outwards to remove.



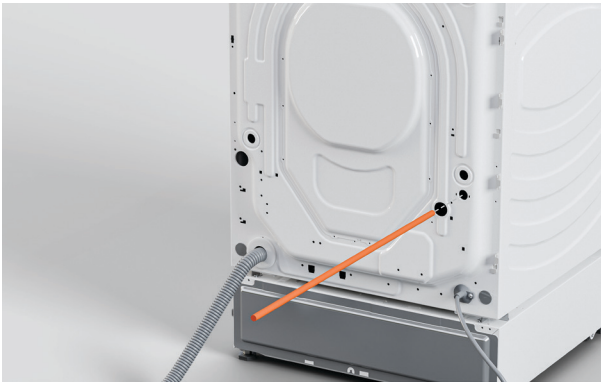
3. Using a Phillips screwdriver, remove the two side brackets.
*Brackets apply to select models only.

REMOVE WASHER TRANSIT BOLTS



4. Remove and discard the braces.

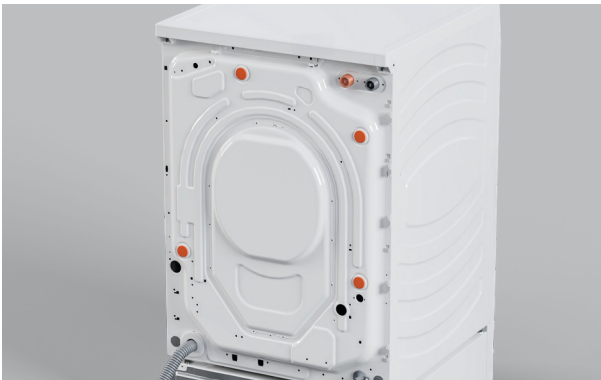
*Brace applies to select models only.



5. Pull the transit rods outwards to remove.

Set aside for future use.

*Transit rod applies to select models only.

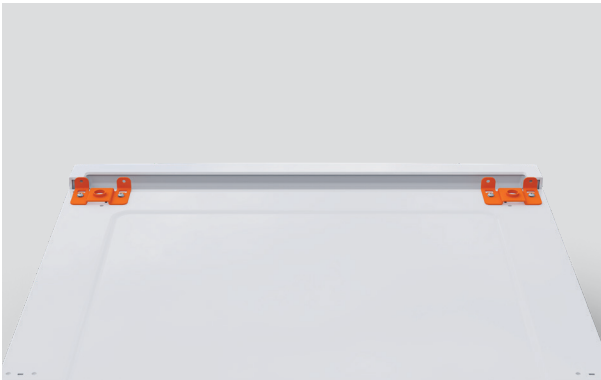


6. Cover the transit bolt holes using the supplied plugs.

FIT DRYER TO PLINTH



1. Remove the four pre-fitted plinth brackets using a Phillips screwdriver. Set screws aside for later use.



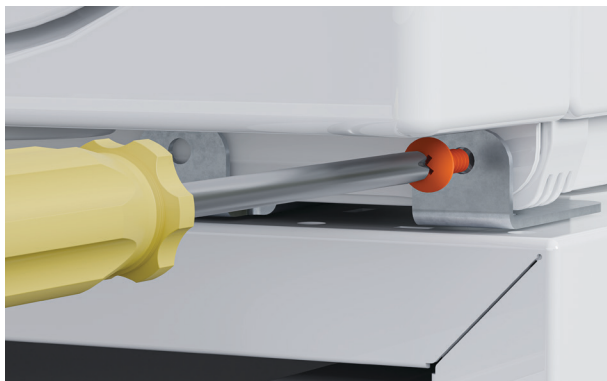
2. Fit the two supplied front dryer brackets using the screws removed in step 1.



3. Tilt dryer back to remove all four dryer feet.

Ensure dryer remains upright when tilting, do not lay dryer on its back to remove feet.

FIT DRYER TO PLINTH

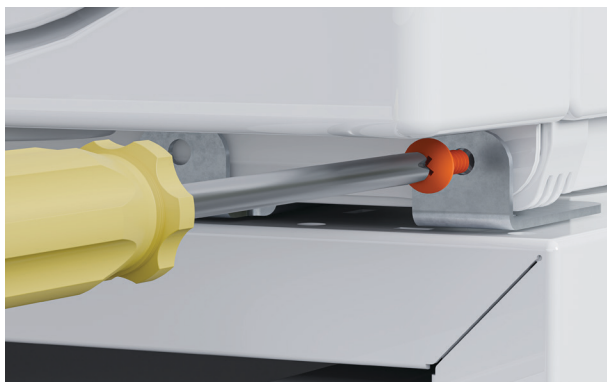


4. Remove the front panel screws.



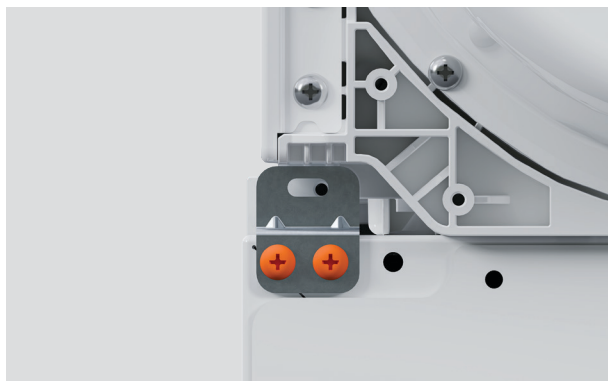
5. Lift the dryer onto the plinth and slot the front feet securely into the front brackets.

Ensure the dryer front feet pockets are properly seated on the plinth brackets.

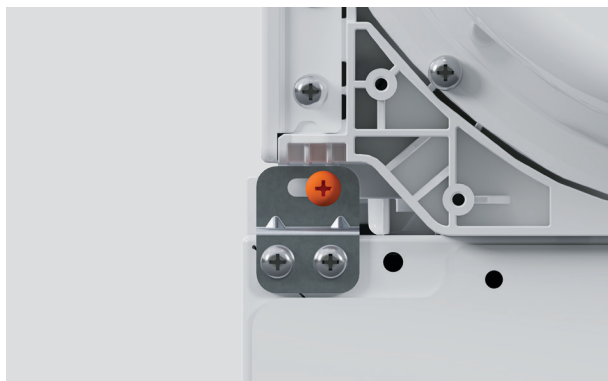


6. Refit the front panel screws through the plinth bracket using screw driver.

FIT DRYER TO PLINTH



7. Fit the two supplied rear brackets to the plinth using the screws removed in step 1.



8. Using the two supplied long screws, secure the dryer to the plinth at the rear.

LEVEL PRODUCT SET



1. Partly roll products into alcove and check alignment. To do this, use the supplied 6mm hex key, rotate clockwise to lower both sets of wheels via the adjustment screws.



2. Partially roll stacked products into alcove and check alignment. To do this, use the supplied 6mm hex key, rotate clockwise to lower both sets of wheels via the adjustment screws.



3. Ensure all feet are raised off the floor before rolling the plinth to the final install location.

LEVEL PRODUCT SET



4. Using the supplied 6mm hex key, rotate counter-clockwise to raise both sets of wheels via the adjustment screws.



5. Align washer and dryer with cabinetry.

CONNECT CABLES AND HOSES



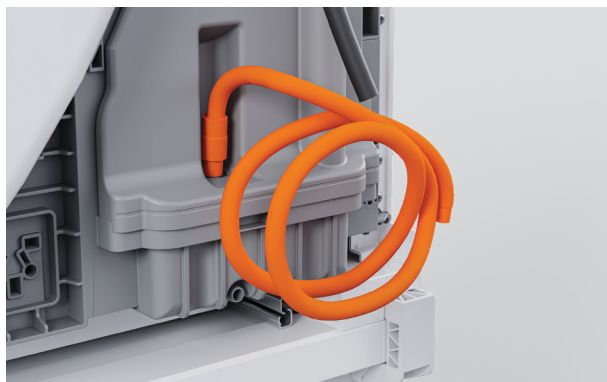
fisherpaykel.com/specify

1. Refer to the Planning Guide for service information.



2. Optional:

For dryers with displays, fit the drain hose extension if the dryer is to be plumbed.



IMPORTANT!

3. Display-free models:

Display-free models must be plumbed and the inter product communication cable correctly installed.

Plumbed installations:
Ensure hose can be connected to a drain.

CONNECT CABLES AND HOSES



4. Remove caps from washer and dryer before fitting one of the communications cables.

Connect the washer and dryer via the communication cable.



5. Connect the angled end of the cold water hose (supplied with washer) to the dryer.



6. Connect the angled end of the short hose (supplied with dryer) to the cold water inlet on the washer.

CONNECT CABLES AND HOSES



7. Using pliers remove the mesh filters from the end of the hoses, then connect both hoses to the top of the Y joint supplied with the dryer.



8. Connect the straight hose to the bottom of the Y joint. The other end of the straight hose will connect to the cold tap.



9. Connect the angled end of hot hose to the orange outlet on the washer. If hot hose is not required, install a blanking cap.

CONNECT CABLES AND HOSES



10. Partially roll products into the alcove.

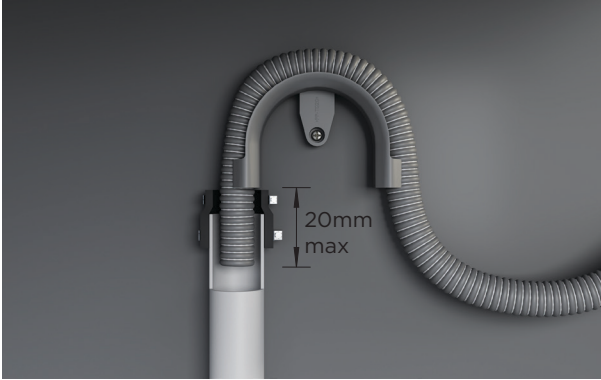


11. Route the power cables and hoses through service holes. Ensure power will remain accessible following install to allow access for any future product maintenance.



12. Install the drain hose guide to the back wall. Refer to the planning guide for placement details.

CONNECT CABLES AND HOSES



13. Standpipe Installations:

Route the drain hose through the guide and place into the standpipe.

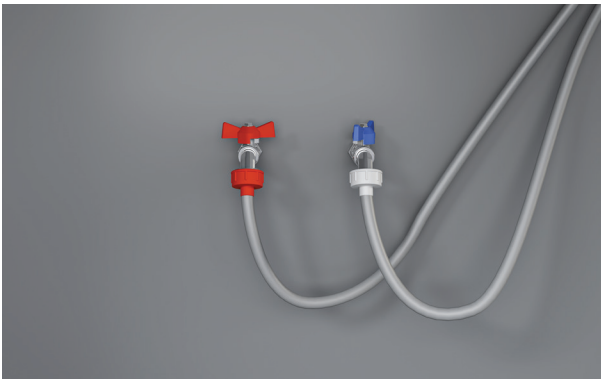
Ensure a maximum of 20mm of the hose is left exposed at the end of the standpipe.



14. Spigot Installations:

Drill out blanking insert from the spigot.

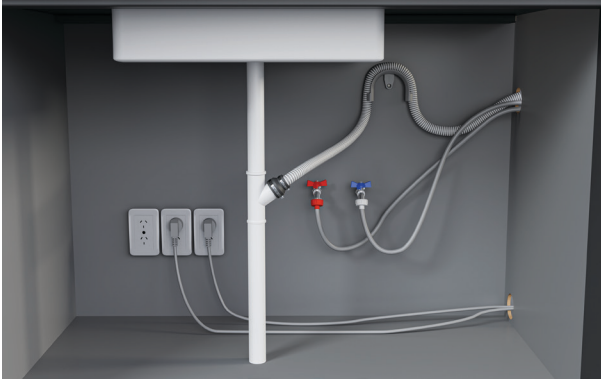
Route the drain hose through the guide and place into the spigot. Secure using a hose clamp.



15. Connect hoses to taps before turning on. Check for leaks at all connection points.

If possible, recheck for leaks 24 hours after installation.

CONNECT CABLES AND HOSES



16. Connect the power cables and check products are powered on and are connected.



17. Roll products into the alcove.

Take care not to damage hoses or cords.



18. Open plinth to access wheels. Turn the adjustment screw counter-clockwise to retract the wheels. Ensure the wheels are fully raised off the floor.

CONNECT CABLES AND HOSES



19. Check alignment and ensure required clearances are maintained. Adjust as required.



20. Once adjustment is complete, fit the plinth bolt hole covers.



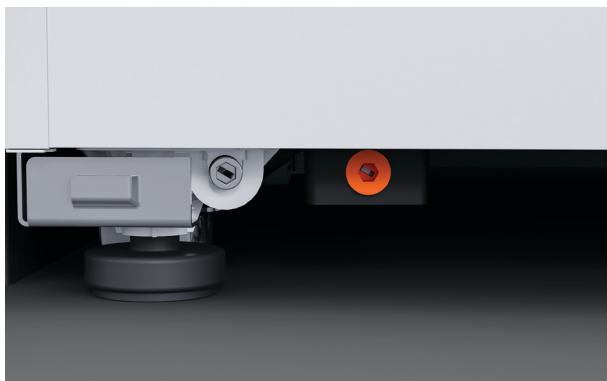
21. Before using washer run a first cycle to ensure there are no leaks, that the product is level and water is turned on.

INSTALL FABRIC CARE CABINET

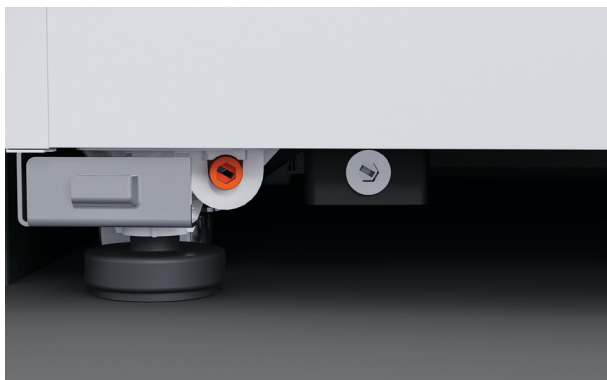


1. Plug the product in and push cabinet into cavity taking care not to damage cords.

Align flush to the front of the cabinetry.

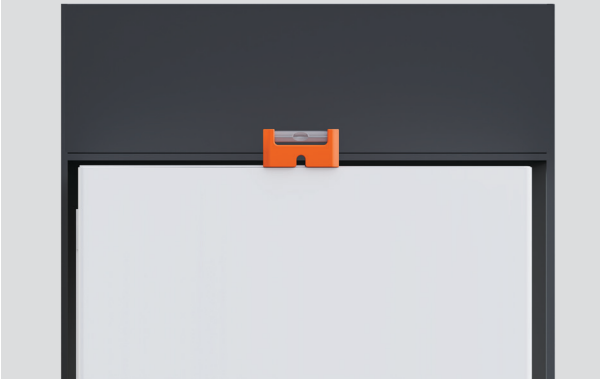


2. Adjust the front of the product by turning the inner screw clockwise to lower the feet.



3. Adjust the rear of the product by turning the outer screw clockwise to lower the feet.

INSTALL FABRIC CARE CABINET



4. Check final alignment and ensure required clearances are maintained.
Adjust as required.



5. Clip drip tray into position.

INSTALLER CHECKLIST

TO BE COMPLETED BY THE INSTALLER.

- ☐ Have the packaging and transit bolts and rods been removed?
- ☐ Is the washer correctly levelled, feet are extended and cabinet corners are clear off the floor?
- ☐ Is the drain hose threaded through the hose guide 'U bend' (with no more than 20mm extended) and hooked into your standpipe or tub, or attached to a spigot?
- ☐ Is the hot hose connected to the hot valve marked 'H'?
- ☐ Is the cold hose connected to the cold valve marked 'C'?
- ☐ Have the taps been turned on?
- ☐ Has the power cord been connected to an appropriate power supply and the power turned on?
- ☐ Have you preformed a test cycle?
- ☐ Complete a **DRUM CLEAN** cycle with half-load amount of detergent and without a load to remove any residues remaining in the washer from the manufacturing process.

FISHERPAYKEL.COM

© Fisher & Paykel Appliances 2025. All rights reserved.

The models shown in this guide may not be available in all markets
and are subject to change at any time.

The product specifications in this guide apply to the specific products and
models described at the date of issue. Under our policy of continuous product
improvement, these specifications may change at any time.

For current details about model and specification availability in your country,
please go to our website or contact your local Fisher & Paykel dealer.

432974A 10.25