

---

# WARMING DRAWER INSTALLATION GUIDE

---

Components required	3
Accessing your product specifications	4
Unpack product	6
Position in cavity	7
Adjust drawer	8
Secure to cavity	9
Fit Professional handle	10
Checklist	11

**FISHER & PAYKEL**

NZ AU

**MINIMAL**

WB76SMG3, WB76SMB3

**CONTEMPORARY**

WB76SCX3

**PROFESSIONAL**

WB76SPEX3

## COMPONENTS REQUIRED

### TOOLS

#### Not supplied

- ☐ T20 star-head screwdriver
- ☐ 5mm Hex key
- ☐ Level
- ☐ Shims

### PARTS

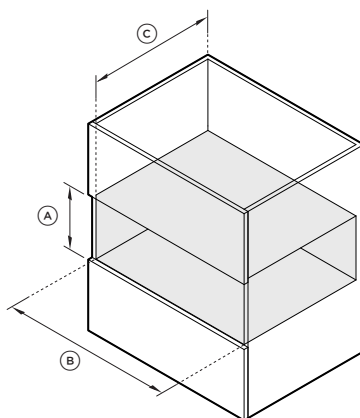
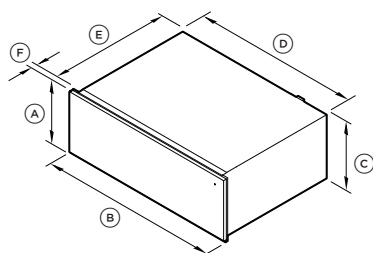
#### Supplied

- ☐ Power cords (1)
- ☐ T20 wood screws (4)
- ☐ T20 machine screws (6)
- ☐ Wire shelf (1)
- ☐ Professional handle kit\*\*
  - Professional handle (1)
  - 5mm hex key (1)
  - Socket screw (2)

## ACCESSING YOUR PRODUCT SPECIFICATIONS



For full product, cabinetry and service specifications, refer to the Planning Guide. To access the Planning Guide, scan the QR code or visit [fisherpaykel.com/specify](https://fisherpaykel.com/specify). Search by appliance type, product name or model code.



### PRODUCT DIMENSIONS

	mm
(A) Overall height	271
(B) Overall width	758
(C) Chassis height	271
(D) Chassis width	704
(E) Chassis depth	547*
(F) Control panel thickness	
Minimal and Contemporary models	20
Professional models	24

\*Including power plug

### CAVITY DIMENSIONS

	mm
(A) Minimum inside height of cavity	273
(B) Minimum inside width of cavity	724
(C) Minimum inside depth of cavity*	580
Recommended cabinet height	273
Recommended cabinet width	762

\*Measured from front of chassis.

## PRIOR TO INSTALLATION

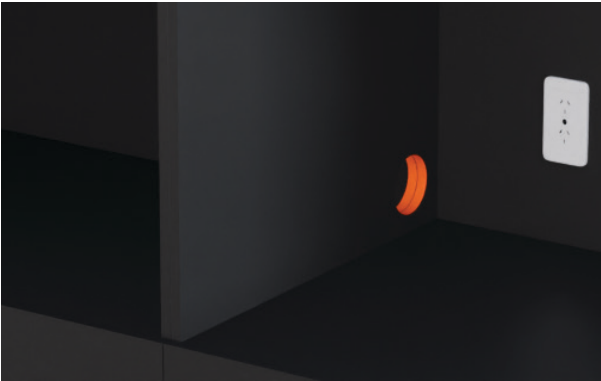


[fisherpaykel.com/specify](https://fisherpaykel.com/specify)

1. Refer to the Planning Guide for cabinetry, cavity, panel and service specifications.

2. Ensure the cabinet meets the minimum cavity specifications required.

The cabinet must be level and square to prevent the need for product adjustments such as shimming.



## UNPACK PRODUCT



1. Carefully remove the warming drawer and accessories box from the packaging.

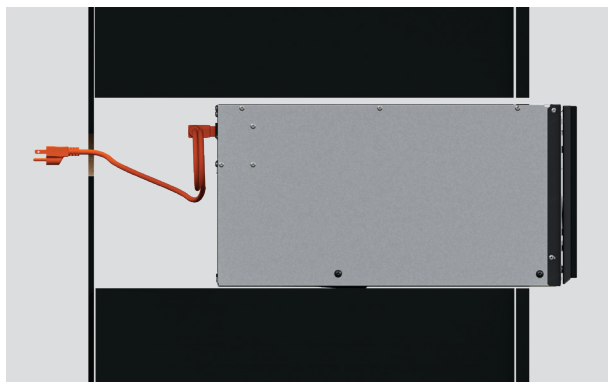


2. Dispose of packaging responsibly.

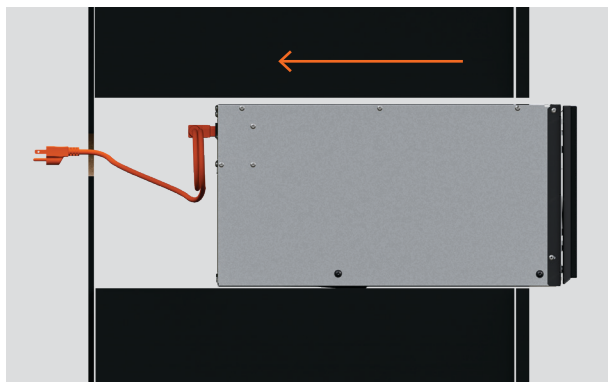
## POSITION IN CAVITY



1. Connect the power cable to the product and the power supply.

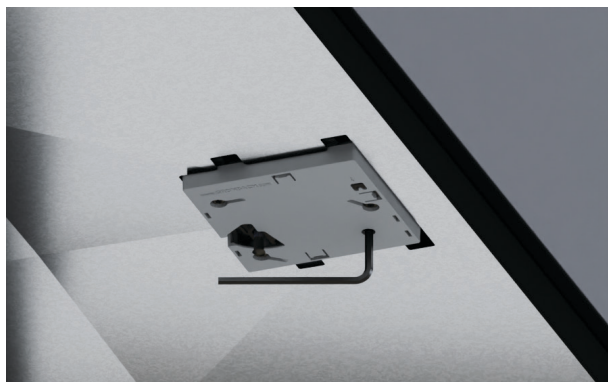


2. Apply protective tape to adjacent cabinetry panels before lifting product into place.



3. Carefully push the warming drawer into the cabinetry.

## ADJUST DRAWER

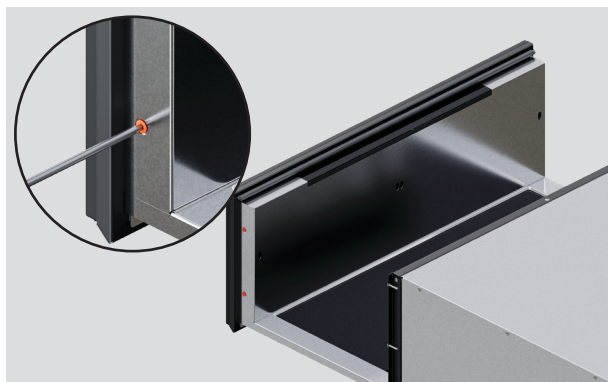


### 1. Adjust depth:

Open the drawer fully.

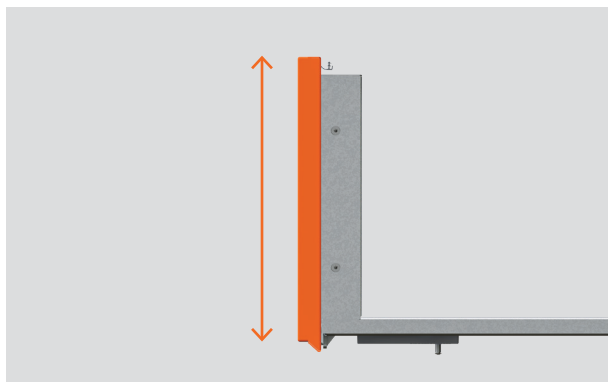
Use a hex key to adjust the front panel position by up to 4 mm.

Turn clockwise to move the panel back, or counter-clockwise to move it forward.



### 1. Adjust height:

Open the drawer fully and slightly loosen the T20 star head screws.



### 2. Adjust height:

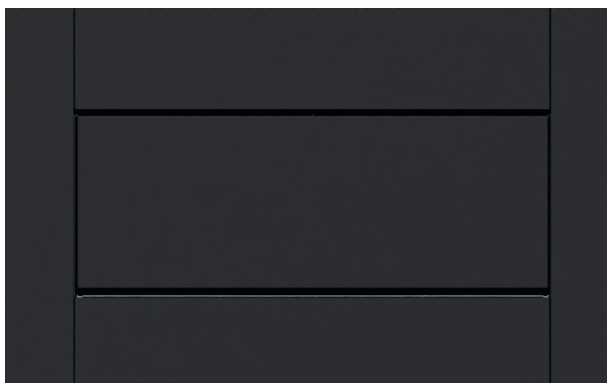
Adjust the drawer height by up to 2 mm and re-tighten the screws to secure.



## SECURE TO CAVITY

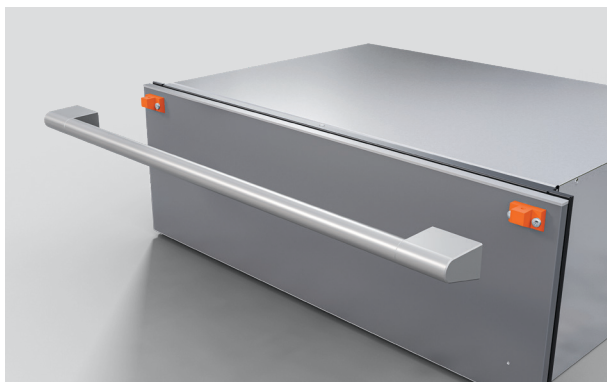


**1.** Open the drawer and secure to the cabinetry using the supplied T20 star head screws.



**2.** Close the drawer to check alignment and readjust if needed.

## FIT PROFESSIONAL HANDLE



1. Align the handle with the mounts on the product.



2. Secure using the supplied hex key.

# CHECKLIST

## Installation checks

- ☐ All clearances are correct.
- ☐ The product is level and securely fitted in the cabinetry.
- ☐ All internal packaging is removed.
- ☐ The isolating switch can be easily reached.

## Test operation

- ☐ Open the drawer.
- ☐ Press the power button to turn it on.
- ☐ Close the drawer.
- ☐ After 5-10 minutes, open the drawer to check it is warming.
- ☐ Press the power button to turn it off before closing the drawer.

## Complete and keep for safe reference:

Model \_\_\_\_\_

Serial no. \_\_\_\_\_

Purchase date \_\_\_\_\_

Purchaser \_\_\_\_\_

Dealer address \_\_\_\_\_

Installer's name \_\_\_\_\_

Installer's signature \_\_\_\_\_

Installation company \_\_\_\_\_

Installation date \_\_\_\_\_

