

# **FISHER & PAYKEL**

## **FABRIC CARE SOLUTION**

---

### **WASHER INSTALLATION**

WH8060J5, WH9060J5, WH8060P5, WH8060PG5, WH9060P5, WH9060PG5, WH1060P5, WH1060PG5, WH1260P5, WH1260PG5, WH9060D5, WH9060DG5, WH1060D5, WH1060DG5, WH1260D5, WH1260DG5, WH1260R5, WH1260RG5, WH1260MZB5, WH1260T5, WH1260TG5, WH1260H5, WH1260HG5, WH1260YZB5 models.

### **INSTALLATION GUIDE**

**NZ AU**

**COMPONENTS REQUIRED**

---

..... **TOOLS** .....

**Supplied**

☐    Spanner

**Not Supplied**

☐    Box cutter

☐    Phillips #2 screwdriver

☐    Level

..... **PARTS** .....

**Supplied**

☐    1x Cold water hose

☐    1x Hot water hose

☐    1x Blanking cap

☐    7x Plugs

## ACCESSING YOUR PRODUCT SPECIFICATIONS

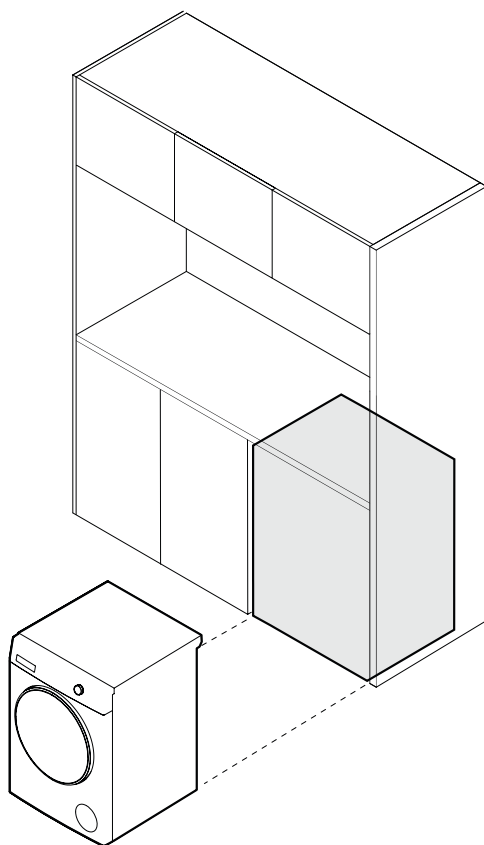
---



---

For full product, cabinetry and service specifications, refer to the Planning Guide. To access the Planning Guide, scan the QR code or visit [fisherpaykel.com/specify](https://fisherpaykel.com/specify). Search by appliance type, product name or model code.

---



## PRIOR TO INSTALLATION

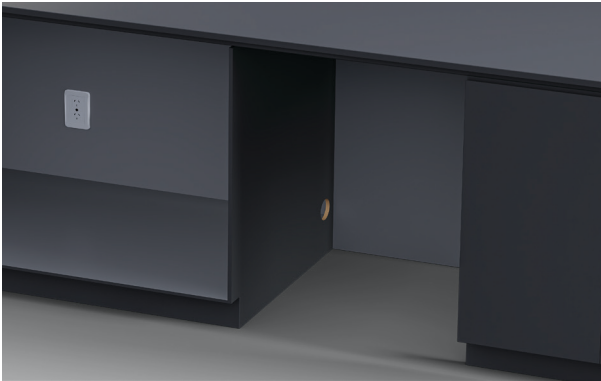
---



[Fisherpaykel.com/specify](https://fisherpaykel.com/specify)

1. Ensure cabinetry and servicing specifications have been met and clearances have been considered.

Refer to the Planning Guide for details.



2. Ensure floor is level and clear and a finished return has been created.



3. Ensure power will remain accessible following install to allow access for any future product maintenance.

Service holes should be smooth with grommets installed where required.

Refer to the services section of the Planning Guide for more details.

## UNPACK

---



1. Cut the straps and the line printed on the top of the carton. Lift to remove. Discard braces and corner posts. Remove any packaging and accessories from the drum and base packer.

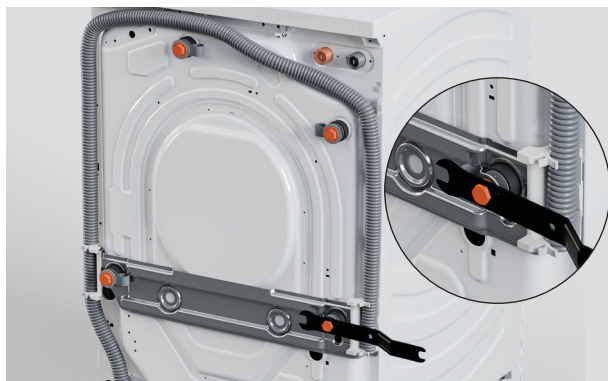


2. Dispose of packaging responsibly.

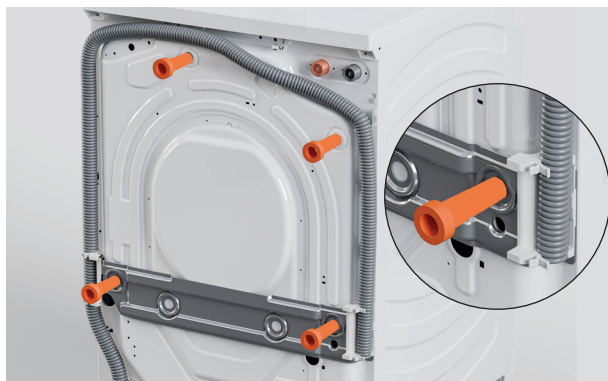


3. Protect flooring before positioning washer as close to the installation location as possible, ensuring enough working room is left available.

## REMOVE TRANSIT BOLTS



1. Using the supplied spanner, remove all four transit bolts from the back of the washer.



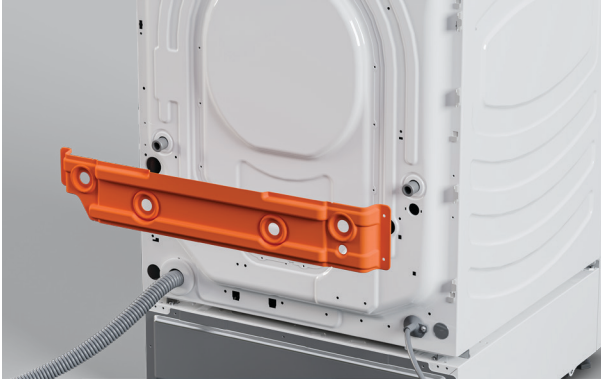
2. Pull the rubber grommets and spacers outwards to remove.



3. Using a Phillips screwdriver, remove the two side brackets.  
\*Brackets apply to select models only.

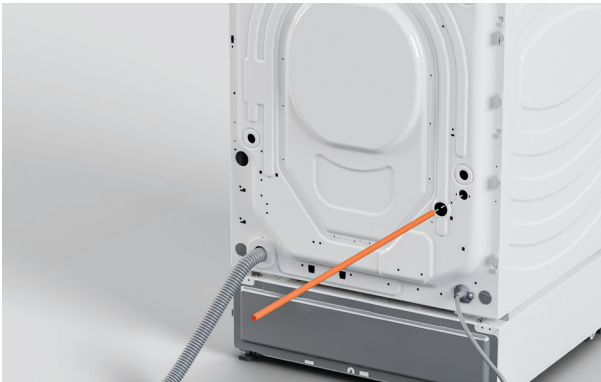
## REMOVE TRANSIT BOLTS

---



**4.** Remove and discard the braces.

\*Brace applies to select models only.



**5.** Pull the transit rods outwards to remove.

Set aside for future use.

\*Transit rod applies to select models only.



**6.** Cover the transit bolt holes using the supplied plugs.

## LEVEL

---



1. Adjust the feet using the supplied spanner until the washer is level front to back and corner to corner.



2. Once level, move the washer into its final position allowing for required clearances.

Recheck washer is level before removing from the alcove.



3. Remove the washer from the alcove and tighten locking nuts.



## CONNECT CABLES AND HOSES

---



[Fisherpaykel.com/specify](https://fisherpaykel.com/specify)

1. Refer to the Planning Guide for full service information.



2. Connect the angled end of cold hose to the cold water inlet on the washer.



3. Connect angled end of hot water hose to the orange outlet on the washer. If hot hose is not required, install a blanking cap.

## CONNECT CABLES AND HOSES

---



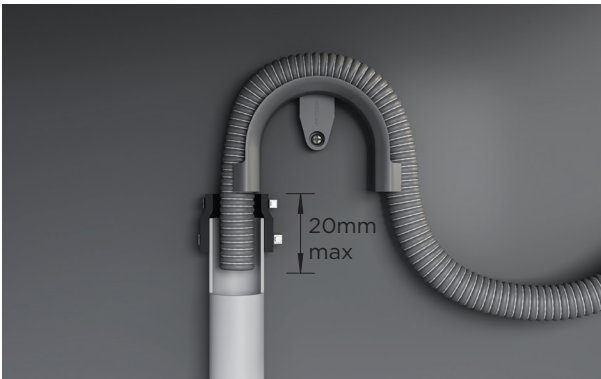
**4. Route the power cables and hoses through service holes.**

Ensure power will remain accessible following install to allow access for any future product maintenance.



**5. Install the drain hose guide to the back wall.**

Refer to the planning guide for placement details.



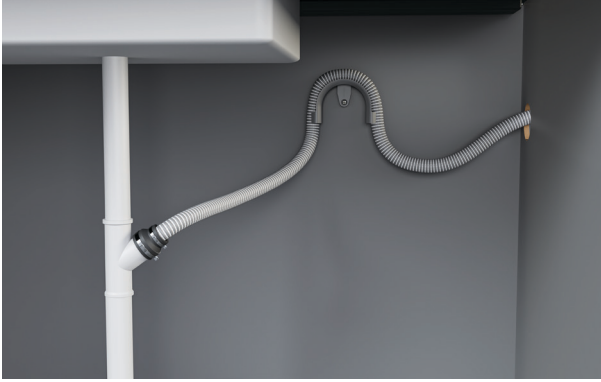
**6. Standpipe Installations:**

Route the drain hose through the guide and place into the standpipe.

Ensure a maximum of 20mm of the hose rests in the standpipe.

## CONNECT CABLES AND HOSES

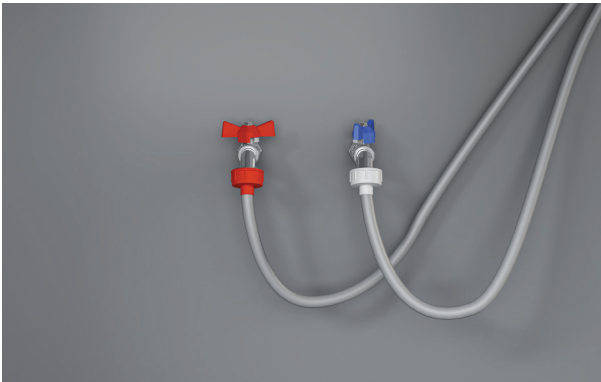
---



### 7. Spigot Installations:

Drill out blanking insert from the spigot.

Route the drain hose through the guide and place into the spigot. Secure using a hose clamp.



8. Connect hoses to taps before turning on. Check for leaks at all connection points.

If possible, recheck for leaks 24 hours after installation.



9. Connect the power cable and check washer is powered on and connected.

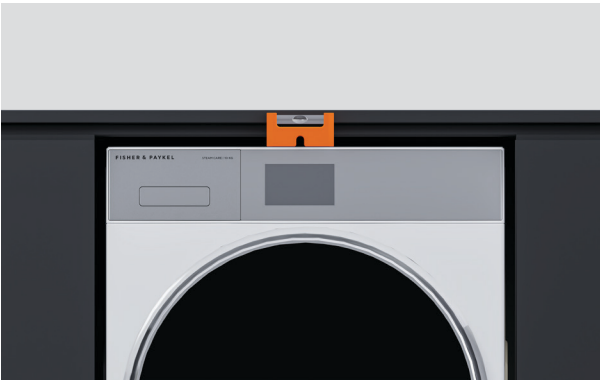
## INSTALL WASHER

---



1. Push washer into the alcove.

**Take care not to damage hoses or power cord.**



2. Check alignment and ensure required clearances are maintained. Adjust as required.



3. Before using washer run a first cycle to ensure there are no leaks, that the product is level and water is turned on.

## INSTALLER CHECKLIST

---

### TO BE COMPLETED BY THE INSTALLER.

- ☐ Have the packaging and transit bolts and rods been removed?
- ☐ Is the washer correctly levelled, feet are extended and cabinet corners are clear off the floor?
- ☐ Is the drain hose threaded through the hose guide 'U bend' (with no more than 20mm extended) and hooked into your standpipe or tub, or attached to a spigot?
- ☐ Is the hot hose connected to the hot valve marked 'H'?
- ☐ Is the cold hose connected to the cold valve marked 'C'?
- ☐ Have the taps been turned on?
- ☐ Has the power cord been connected to an appropriate power supply and the power turned on?
- ☐ Have you preformed a test cycle?
- ☐ Complete a **DRUM CLEAN** cycle with half-load amount of detergent and without a load to remove any residues remaining in the washer from the Manufacturing process.

**FISHERPAYKEL.COM**

© Fisher & Paykel Appliances 2025. All rights reserved.

The models shown in this guide may not be available in all markets  
and are subject to change at any time.

The product specifications in this guide apply to the specific products and  
models described at the date of issue. Under our policy of continuous product  
improvement, these specifications may change at any time.

For current details about model and specification availability in your country,  
please go to our website or contact your local Fisher & Paykel dealer.

**432972A 10.25**